



Nutley High School

2014-2015 Profile



Nutley High School

CEEB Code: 311035

Administration

Russell Lazovick
Superintendent

Gina Villani
Assistant Superintendent

Andrew Levine
*Director of Instructional
Technology & Curriculum*

Jill Divilio
Director of Guidance

Denis Williams
Principal

Frank Francia
Vice Principal

Alfonso Gonnella
Vice Principal

Joseph Piro
Athletic Director

Guidance Counselors

Donna Cocco
Persis Mehta
Kathryn Mitchell
Meredith Rucinsky
Sherrie Tolve
Carrie-Anne Vos

Nutley High School

300 Franklin Avenue
Nutley, NJ 07110

(973) 661-8832

www.nutleyschools.org

COMMUNITY PROFILE

Nutley Township, a suburban residential community of approximately 28,000, is located in a large metropolitan area, which affords its residents the historical and cultural advantages of New York City, while retaining a residential ambiance. Several parks complement the single family dwellings on tree-lined streets and the centrally located business district. One quarter of Nutley's working population is employed in professional occupations while the remainder is employed in clerical, managerial, and skilled labor positions. Approximately 46% of our parents hold at least one college degree.

SCHOOL PROFILE

Nutley High School, accredited by the Middle States Association of Colleges and Schools, is a comprehensive public high school which provides programs to meet the diverse needs of approximately 1,300 students enrolled in grades 9-12. We offer a challenging and rigorous program of study to prepare students for a wide variety of post-secondary educational placements or for employment.

CURRICULUM

The curriculum includes a full academic program and electives in fine and practical art, business, music, and technology. Honors courses are offered in business, music, English, mathematics, science, social studies, and world languages. AP programs are available in biology, chemistry, physics, environmental science, English, calculus, statistics, government/politics, macroeconomics, US history, human geography, French, Latin, Spanish, Italian, and studio art.

In addition, the curriculum is extended to include an Academy of Fine and Performing Arts and has been recognized nationally, since 2008, as one of the Top 100 Communities for Music. The nationally recognized Radio/Television Broadcasting program offers students hands on opportunities to encounter Federal Communications Commission regulations while producing diverse programming aired on the local access cable outlet. The state of the art studio exposes the students to a true network experience within the rigors of live and post production concepts in the global media pathway. Students may enroll in the CISCO Networking Academy and are eligible to earn certification as CISCO Certified Network Associates (CCNA). This is a highly recognized IT certification applicable to all fields of study.

We also offer the students the opportunity to experience workplace readiness and receive on-the-job training through the Cooperative Education Work Experience, School to Careers, and Work Internship programs.

College credit is available to students who select courses designated through a partnership with University of Medicine and Dentistry of New Jersey, Seton Hall University, Rider University, and Fairleigh Dickinson University.

The school's academic program is further enhanced by a co-curricular program that includes twenty-five interscholastic athletic teams. Nutley High School strives to engage as many students as possible in student activities and as a result we offer a wide variety of extra-curricular activities including, dramatics, student government, publications, service organizations and clubs.

STAFF

Nutley High School's dedicated professional staff is committed to providing a rigorous and expansive academic program. Approximately 65% of the staff holds advanced degrees (M.A., Ph.D. or Ed.D.) In the classroom, teachers incorporate technology and instructional strategies, develop critical thinking skills, as well as content knowledge.

GRADUATION REQUIREMENTS FOR THE CLASS OF 2014

In order to graduate from Nutley High School, students must receive a passing score on the New Jersey High School Proficiency Assessment and successfully complete a minimum of 120 credits, with the following requirements:

English.....20 credits	Math.....15 credits	World Languages.....5 credits	Financial Literacy.....2.5 credits
U.S. History.....10 credits	Science.....15 credits	Visual/Performing Arts...5 credits	Computer Applications....2.5 credits
World History/Cultures...5 credits	PE/Health.....20 credits	Practical Arts.....5 credits	<i>Please note: 5 credits = 1 credit year</i>

GRADING SCALE

Nutley High School’s grading scale utilizes letter grades instead of number grades, including “plus” and “minus” designations for letter grades. Please note, Honors (HON) and Advanced Placement (AP) courses are weighted equally. Unweighted grade point average (GPA) is based on a scale beginning with 0.0 and having a ceiling of 4.0. Weighted grade point average (WGPA) is based on a scale beginning with 0.0 and having a ceiling of 4.5. All graded (non-pass/fail) courses are used in the calculation of GPA and WGPA. A student’s cumulative GPA and WGPA are tabulated and posted on the transcript at the conclusion of each school year and on quarterly report cards.

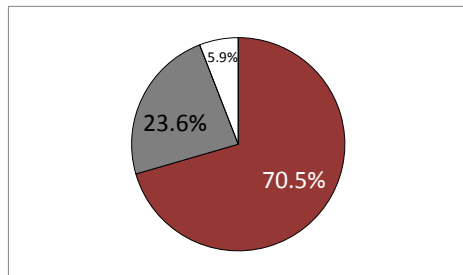
Grade	Numeric Equivalent	GPA	WGPA HON/AP
A	94-100	4.0	4.5
A-	90-93	3.7	4.2
B+	87-89	3.3	3.8
B	83-86	3.0	3.5
B-	80-82	2.7	3.2
C+	77-79	2.3	2.8
C	73-76	2.0	2.5
C-	70-72	1.7	2.2
D+	67-69	1.3	1.8
D	60-66	1.0	1.5
F	<60	0.0	0.0

CLASS RANK

At Nutley High School we create an environment that is academically rigorous. The majority of our students meet that challenge by earning exemplary grades. We believe that rank in class unnecessarily increases competition and that our students’ levels of achievement are not equitably or fully communicated by this single transcript statistic. Nutley School District policy therefore precludes the reporting of rank in class.

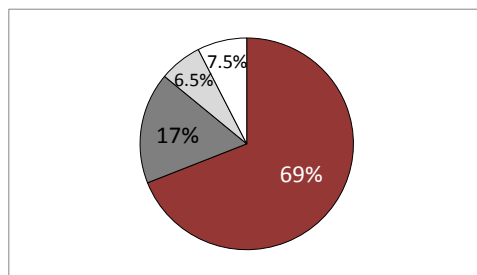
CLASS OF 2012

Senior class enrollment:	301
Higher education	94.1%
4 year colleges	70.5%
2 year colleges	23.6%



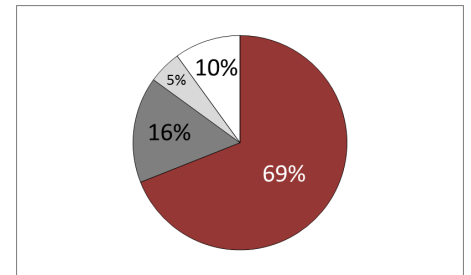
CLASS OF 2013

Senior class enrollment:	352
Higher education	92.5%
4 year colleges	69%
2 year colleges	17%
Career & Technical Education	6.5%



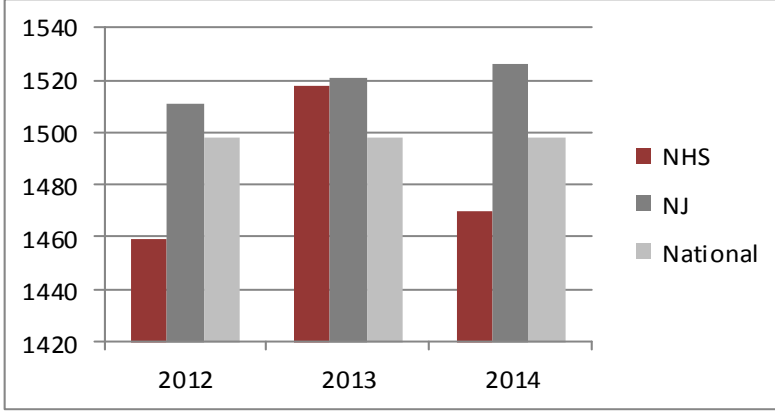
CLASS OF 2014

Senior class enrollment:	317
Higher education	90%
4 year colleges	69%
2 year colleges	16%
Career & Technical Education	5%



SAT I MEAN SCORES

	2012			2013			2014		
	Verbal	Math	Writing	Verbal	Math	Writing	Verbal	Math	Writing
Nutley	473	501	485	494	526	498	473	503	484
NJ	495	517	499	499	522	500	501	523	502
National	496	514	488	496	514	488	497	513	487



SAT II MEAN SCORES

	2012	2013	2014
Literature	575	633	606
US History	631	632	617
Math I	595	623	NA
Math II	711	696	701
Biology-E	660	670	NA
Biology-M	NA	NA	NA
Chemistry	738	589	661
Physics	NA	687	NA

National Merit Award Scholars

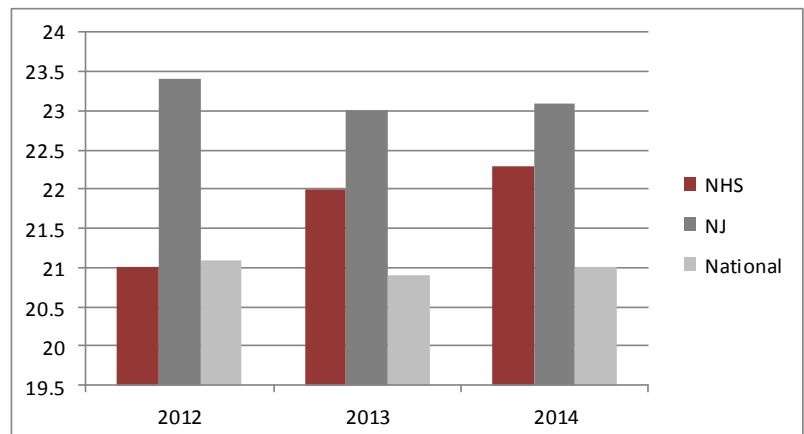
	2012	2013	2014
National Merit Scholarship Recipients			2
National Merit Finalists	1	1	2
National Merit Semifinalists	1	1	2
National Merit Commended	6	5	2

Average Composite ACT Scores

	2012	2013	2014
NHS	21	22	22.3
NJ	23.4	23	23.1
National	21.1	20.9	21

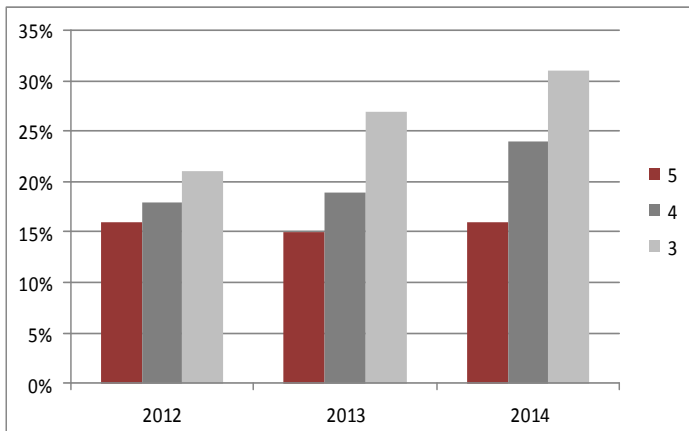
Total Tested

2012	67
2013	114
2014	111



ADVANCED PLACEMENT

2012	2013	2014
144 students	180 students	143 students
292 exams	377 exams	287 exams
53.3% scoring 3 or better	61.8% scoring 3 or better	71% scoring 3 or better



AP SCHOLARS

	2011	2013	2014
	# of students	# of students	# of students
Scholars	12	21	17
Scholars w/Honor	4	13	3
Scholars w/Distinction	11	14	13
National Scholars	3	2	2

CURRICULUM

Nutley High School operates on a traditional 8-period day. Master Schedule Parameters and course prerequisites affect students' opportunities to schedule Honors and AP courses. Exceptional students at Nutley High School are often limited in their ability to schedule multiple Honors and AP courses. It is requested that those facts be considered when evaluating the academic rigor of Nutley High School students' schedules. Honors and AP courses are in **BOLD**.

ENGLISH

English I, II, III, IV; LAL Strategies 9/10, 11; SAT Prep 11, 12; EXIT (Yearbook); School News I, II School News III Honors, ESL Beginner 1 & 2 Reading; ESL Beginner 1 & 2 Writing; ESL Intermediate 1 & 2; ESL Advanced 1 & 2; **English I, II Honors, AP English III, AP Humanities/English IV**

SOCIAL STUDIES

World History; US History I, II; European History; Sociology; Archaeology; Macroeconomics; **World History Honors; US History I Honors; US History II Honors; AP US History; AP Macroeconomics; AP Government & Politics; AP Human Geography**

WORLD LANGUAGES

Spanish I, II, III, IV; Italian I, II, III, IV; French I; Latin I; **Spanish III, IV, V Honors; Italian III, IV, V Honors; French III, IV Honors; Latin III, IV Honors; AP Spanish Language & Culture; AP Italian Language & Culture; AP French Language & Culture; AP Latin**

SCIENCE

Biology; Chemistry; Physics; Earth/Space Science; Environmental Science; Marine Science; Forensic Science; Microbiology; Human Physiology; Health Dynamics; **Biology Honors; Chemistry Honors; Forensic Science Honors; Nutrition & Health Dynamics Honors; Physics Honors; Human Physiology Honors; AP Biology; AP Chemistry; AP Physics, AP Physics 1 Algebra Based; AP Physics 2; AP Environmental Science**

MATHEMATICS

Algebra I; Advanced Algebra I; Algebra II; Advanced Algebra II; Algebra II Fundamentals; College Algebra; Geometry; Advanced Geometry; Pre-Calculus; Calculus; Advanced Algebra with Trig; **Accelerated Algebra II Honors; Accelerated Geometry Honors; Accelerated Pre-Calculus Honors; AP Calculus AB; AP Calculus BC; AP Statistics**

FINE & PERFORMING ARTS

Art Fundamentals; Art I, II; Advanced Art; Portfolio Building; Digital Photography; Music Exploration; Music Fundamentals I, II; Concert Band; Orchestra; Choralettes; Concert Choir; Jazz Lab; Arts Academy; Instrumental Lessons; **Chamber Singers Honors; Wind Ensemble Honors; AP Studio Art: Drawing, 2-D & 3-D**

CAREER, CONSUMER & LIFE SKILLS

Computer Applications; Financial Literacy; IT Essentials; CISCO I; Web Design; International Business Practice Firm; Business Law; Sports & Entertainment Marketing; Digital Photography II; Woodworking; Furniture Fabrication; Carpentry; Practical Electricity; Metalworking; Advanced Metals; Mechanical Drawing; Residential Architecture; Culinary; Advanced Culinary; Hospitality Management; Radio/TV Broadcasting I, II; Cooperative Education Work Experience; Intern & Apprenticeships; School to Careers; **Radio/TV Broadcasting III Honors; Cisco II Honors; CP Accounting Honors**

CLASS OF 2014 ACCEPTANCES

Adelphi University
Albright College
Alvernia College
American University
Arcadia University
Arizona State University
The University of Arizona
Bard College
Bloomfield College
Bloomsburg University
Boston College
Boston University
University of Bridgeport
Bowdoin College
Bryant University
Buffalo State College
Cairn University
Caldwell College
University of California
California State Polytech. University
California State University
Castleton State College
The Catholic University of America
Centenary College
Central Connecticut State University
University of Central Florida
Champlain College
City College of New York
Clarion University of Pennsylvania
Coastal Carolina University
Colgate University
University of Colorado
Columbia College Chicago
University of Connecticut
The Culinary Institute of America
University of Dayton
Delaware Valley College
University of Delaware
DeSales University
Drew University
Drexel University
Duquesne University

East Stroudsburg University
Emerson College
Fairfield University
Fairleigh Dickinson University
Fashion Institute of Technology
Felician College
Fordham University
George Mason University
Georgian Court University
Goucher College
Green Mountain College
University of Hartford
Hofstra University
University of Houston
Hunter College
University of Idaho
University of Chicago
Indiana University at Bloomington
Iona College
Ithaca College
James Madison University
John Jay College of Criminal Justice
Johns Hopkins University
Johnson & Wales University
Kansas State University
Kean University
Kutztown University
La Salle University
Lasell College
Lehigh University
Long Island University
Loyola University Maryland
Manhattan College
Manhattanville College
Marist College
University of Maryland
Marymount Manhattan College
Massachusetts College of Pharmacy & Health Sciences

University Massachusetts
University of Miami
Michigan State University
Mississippi State University
Mitchell College
Monmouth University
Montclair State University
Moravian College
Muhlenberg College
University of New Hampshire
University of New Haven
New Jersey City University
New Jersey Institute of Technology
The College of New Jersey
New York Institute of Technology
New York University
Newbury College
Northeastern University
Northern Illinois University
Nyack College
Pace University
Parsons the New School for Design
Pennsylvania State University
Philadelphia University
Potomac State College
Plymouth State University
Pratt Institute
Purchase College, SUNY
Queens College of the CUNY
Quinnipiac University
Ramapo College of New Jersey
Rensselaer Polytechnic Institute
University of Rhode Island
Richard Stockton College
University of Richmond
Rider University
Rochester Institute of Technology
Roger Williams University
Rowan University
Rutgers University
Sacred Heart University

College of Saint Elizabeth
Saint Joseph's University
Saint Mary's College
Saint Peter's University
The College of Saint Rose
Salve Regina University
San Diego State University
University of San Diego
School of Visual Arts
University of the Sciences
University of Scranton
Seton Hall University
Southern Connecticut State University
Springfield College
St. Francis College
St. John's University
Stetson University
Stevens Institute of Technology
SUNY Colleges - Cortland, Oneonta, Oswego
Susquehanna University
Syracuse University
The University of Tampa
Temple University
Towson University
University of the Arts
Vaughn College of Aeronautics & Tech.
University of Vermont
Villanova University
Virginia Commonwealth University
University of Virginia
Wagner College
Washington College
Wells College
Wentworth Institute of Technology
Wesley College
West Chester University
West Virginia University
Wichita State University
Widener University
Wilkes University
William Paterson University
Worcester Polytechnic Institute
York College of Pennsylvania