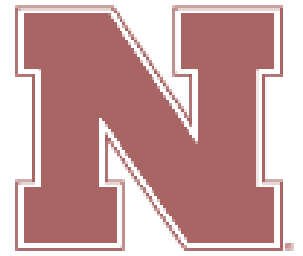




Nutley High School

2015-2016 Profile



Nutley High School

CEEB Code: 311035

Administration

Russell Lazovick
Superintendent

Gina Villani
Assistant Superintendent

Andrew Levine
*Director of Instructional
Technology & Curriculum*

Jill Divilio
Director of Guidance

Denis Williams
Principal

Frank Francia
Vice Principal

Alfonso Gonnella
Vice Principal

Joseph Piro
Athletic Director

Guidance Counselors

Donna Cocco
Meredith Gerckens
Persis Mehta
Kathryn Mitchell
Sherrie Tolve
Carrie-Anne Vos

Nutley High School

300 Franklin Avenue
Nutley, NJ 07110

(973) 661-8832

www.nutleyschools.org

COMMUNITY PROFILE

Nutley Township, a suburban residential community of approximately 28,000, is located in a large metropolitan area, which affords its residents the historical and cultural advantages of New York City, while retaining a residential ambiance. Several parks complement the single family dwellings on tree-lined streets and the centrally located business district. One quarter of Nutley's working population is employed in professional occupations while the remainder is employed in clerical, managerial, and skilled labor positions. Approximately 46% of our parents hold at least one college degree.

SCHOOL PROFILE

Nutley High School, accredited by the Middle States Association of Colleges and Schools, is a comprehensive public high school which provides programs to meet the diverse needs of approximately 1,300 students enrolled in grades 9-12. We offer a challenging and rigorous program of study to prepare students for a wide variety of post-secondary educational placements or for employment.

CURRICULUM

The curriculum includes a full academic program and electives in fine and practical art, business, music, and technology. Honors courses are offered in business, music, English, mathematics, science, social studies, and world languages. AP programs are available in biology, chemistry, physics, environmental science, English, calculus, statistics, government/politics, macroeconomics, US history, human geography, French, Latin, Spanish, Italian, and studio art.

In addition, the curriculum is extended to include an Academy of Fine and Performing Arts and has been recognized nationally, since 2008, as one of the Top 100 Communities for Music. The nationally recognized Radio/Television Broadcasting program offers students hands on opportunities to encounter Federal Communications Commission regulations while producing diverse programming aired on the local access cable outlet. The state of the art studio exposes the students to a true network experience within the rigors of live and post production concepts in the global media pathway. Students may enroll in the CISCO Networking Academy and are eligible to earn certification as CISCO Certified Network Associates (CCNA). This is a highly recognized IT certification applicable to all fields of study.

We also offer the students the opportunity to experience workplace readiness and receive on-the-job training through the Cooperative Education Work Experience, School to Careers, and Work Internship programs.

College credit is available to students who select courses designated through a partnership with University of Medicine and Dentistry of New Jersey, Seton Hall University, Rider University, and Fairleigh Dickinson University.

The school's academic program is further enhanced by a co-curricular program that includes twenty-five interscholastic athletic teams. Nutley High School strives to engage as many students as possible in student activities and as a result we offer a wide variety of extra-curricular activities including, dramatics, student government, publications, service organizations and clubs.

STAFF

Nutley High School's dedicated professional staff is committed to providing a rigorous and expansive academic program. Approximately 65% of the staff holds advanced degrees (M.A., Ph.D. or Ed.D.) In the classroom, teachers incorporate technology and instructional strategies, develop critical thinking skills, as well as content knowledge.

GRADUATION REQUIREMENTS FOR THE CLASS OF 2014

In order to graduate from Nutley High School, students must receive a passing score on the New Jersey High School Proficiency Assessment and successfully complete a minimum of 120 credits, with the following requirements:

English.....20 credits Math.....15 credits World Languages.....5 credits Financial Literacy.....2.5 credits
 U.S. History.....10 credits Science.....15 credits Visual/Performing Arts...5 credits Computer Applications....2.5 credits
 World History/Cultures...5 credits PE/Health.....20 credits Practical Arts.....5 credits *Please note: 5 credits = 1 credit year*

GRADING SCALE

Nutley High School’s grading scale utilizes letter grades instead of number grades, including “plus” and “minus” designations for letter grades. Please note, Honors (HON) and Advanced Placement (AP) courses are weighted equally. Unweighted grade point average (GPA) is based on a scale beginning with 0.0 and having a ceiling of 4.0. Weighted grade point average (WGPA) is based on a scale beginning with 0.0 and having a ceiling of 4.5. All graded (non-pass/fail) courses are used in the calculation of GPA and WGPA. A student’s cumulative GPA and WGPA are tabulated and posted on the transcript at the conclusion of each school year and on quarterly report cards.

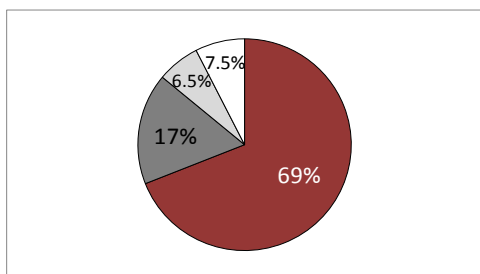
Grade	Numeric Equivalent	GPA	WGPA HON/AP
A	94-100	4.0	4.5
A-	90-93	3.7	4.2
B+	87-89	3.3	3.8
B	83-86	3.0	3.5
B-	80-82	2.7	3.2
C+	77-79	2.3	2.8
C	73-76	2.0	2.5
C-	70-72	1.7	2.2
D+	67-69	1.3	1.8
D	60-66	1.0	1.5
F	<60	0.0	0.0

CLASS RANK

At Nutley High School we create an environment that is academically rigorous. The majority of our students meet that challenge by earning exemplary grades. We believe that rank in class unnecessarily increases competition and that our students’ levels of achievement are not equitably or fully communicated by this single transcript statistic. Nutley School District policy therefore precludes the reporting of rank in class.

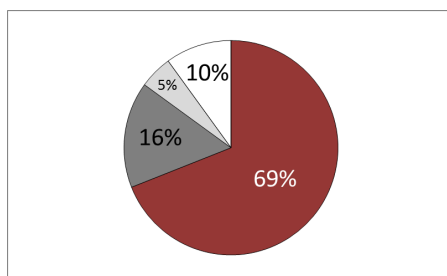
CLASS OF 2013

Senior class enrollment: 352
 Higher education 92.5%
 4 year colleges 69%
 2 year colleges 17%
 Career & Technical Education 6.5%



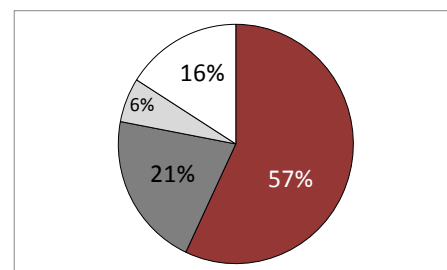
CLASS OF 2014

Senior class enrollment: 317
 Higher education 90%
 4 year colleges 69%
 2 year colleges 16%
 Career & Technical Education 5%



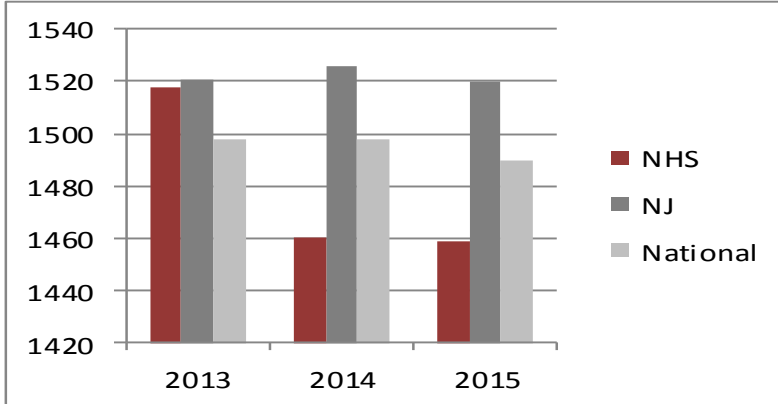
CLASS OF 2015

Senior class enrollment: 302
 Higher education 84%
 4 year colleges 57%
 2 year colleges 21%
 Career & Technical Education 6%



SAT I MEAN SCORES

	2013			2014			2015		
	Verbal	Math	Writing	Verbal	Math	Writing	Verbal	Math	Writing
Nutley	494	526	498	473	503	484	481	498	480
NJ	499	522	500	501	523	502	500	521	499
National	496	514	488	497	513	487	495	511	484



SAT II MEAN SCORES

	2013	2014	2015
Literature	633	606	648
US History	632	617	598
Math I	623	NA	NA
Math II	696	701	711
Biology-E	670	NA	NA
Chemistry	589	661	675
Physics	687	NA	NA

National Merit Award Scholars

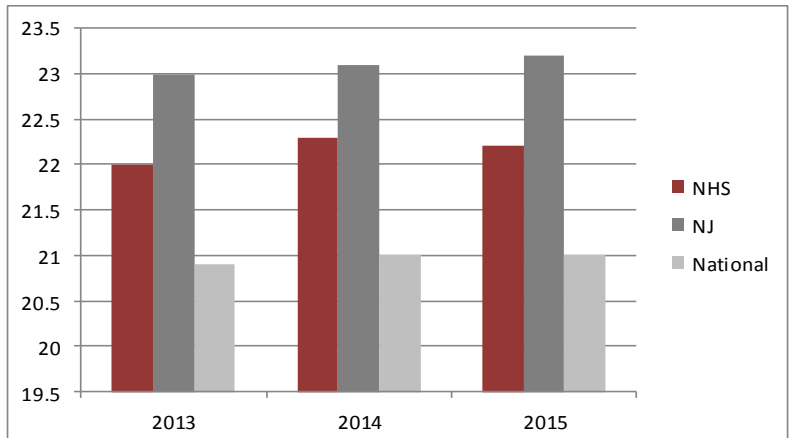
	2013	2014	2015
National Merit Scholarship Recipients		2	
National Merit Finalists	1	2	1
National Merit Semifinalists	1	2	1
National Merit Commended	5	2	5

Average Composite ACT Scores

	2013	2014	2015
NHS	22	22.3	22.2
NJ	23	23.1	23.2
National	20.0	21	21

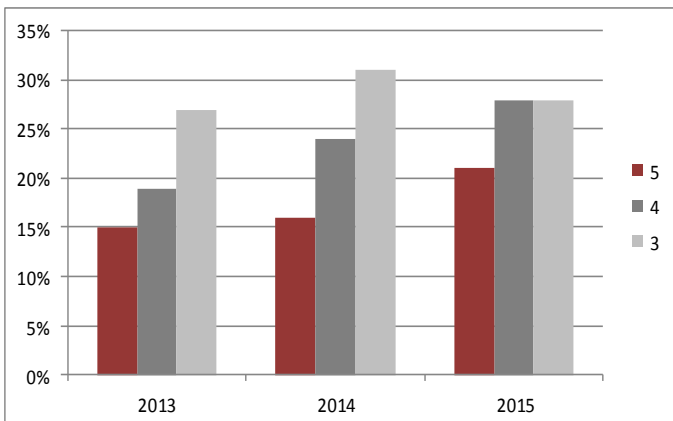
Total Tested

2013	114
2014	111
2015	102



ADVANCED PLACEMENT

2013	2014	2015
180 students	143 students	148 Students
377 exams	287 exams	286 Exams
61.8% scoring 3 or better	71% scoring 3 or better	77% scoring 3 or better



AP SCHOLARS

	2013	2014	2015
	# of students	# of students	# of students
Scholars	21	17	21
Scholars w/Honor	13	3	14
Scholars w/Distinction	14	13	12
National Scholars	2	2	2

CURRICULUM

Nutley High School operates on a traditional 8-period day. Master Schedule Parameters and course prerequisites affect students' opportunities to schedule Honors and AP courses. Exceptional students at Nutley High School are often limited in their ability to schedule multiple Honors and AP courses. It is requested that those facts be considered when evaluating the academic rigor of Nutley High School students' schedules. Honors and AP courses are in **BOLD**.

ENGLISH

English I, II, III, IV; SAT Prep 11, 12; EXIT (Yearbook); School News I, II School News III Honors, ESL Beginner 1 & 2 Reading; ESL Beginner 1 & 2 Writing; ESL Intermediate 1 & 2; ESL Advanced 1 & 2; **English I, II Honors, AP English III, AP Humanities/English IV**

SOCIAL STUDIES

World History; US History I, II; European History; Sociology; Archaeology; Macroeconomics; **World History Honors; US History I Honors; US History II Honors; AP US History; AP Macroeconomics; AP Government & Politics; AP Human Geography**

WORLD LANGUAGES

Spanish I, II; Italian I, II; French I, II; Latin I, II; **Spanish III, IV Honors; Italian III, IV Honors; French III, IV Honors; Latin III, IV Honors; AP Spanish Language & Culture; AP Italian Language & Culture; AP French Language & Culture; AP Latin**

SCIENCE

Biology; Chemistry; Physics; Earth/Space Science; Environmental Science; Marine Science; Forensic Science; Microbiology; Human Physiology; Health Dynamics; **Biology Honors; Chemistry Honors; Forensic Science Honors; Nutrition & Health Dynamics Honors; Human Physiology Honors; AP Biology; AP Chemistry; AP; AP Physics 1 Algebra Based; AP Physics 2; AP Environmental Science**

MATHEMATICS

Algebra I; Advanced Algebra I; Algebra II; Advanced Algebra II; Algebra II Fundamentals; College Algebra; Geometry; Advanced Geometry; Pre-Calculus; Calculus; Advanced Algebra with Trig; **Accelerated Algebra II Honors; Accelerated Geometry Honors; Accelerated Pre-Calculus Honors; AP Calculus AB; AP Calculus BC; AP Statistics**

FINE & PERFORMING ARTS

Art Fundamentals; Art I, II; Advanced Art; Portfolio Building; Digital Photography; Music Exploration; Music Fundamentals I, II; Concert Band; Orchestra; Choralettes; Concert Choir; Jazz Lab; Arts Academy; Instrumental Lessons; **Chamber Singers Honors; Wind Ensemble Honors; AP Studio Art: Drawing, 2-D & 3-D**

CAREER, CONSUMER & LIFE SKILLS

Computer Applications; Financial Literacy; IT Essentials; CISCO I; Web Design; International Business Practice Firm; Business Law; Sports & Entertainment Marketing; Digital Photography II; Woodworking; Furniture Fabrication; Carpentry; Practical Electricity; Metalworking; Advanced Metals; Mechanical Drawing; Residential Architecture; Culinary; Advanced Culinary; Hospitality Management; Radio/TV Broadcasting I, II; Cooperative Education Work Experience; Intern & Apprenticeships; School to Careers; **Radio/TV Broadcasting III Honors; Cisco II Honors; CP Accounting Honors**

CLASS OF 2015 ACCEPTANCES

Adelphi University
University of Akron
University of Alabama
Albany College of Pharmacy
Albright College
Alvernia College
Arcadia University
Arizona State University
The University of Arizona
Auburn University
Becker College
Berkley College
Binghamton University
Bloomfield College
Bloomsburg University
Boston University
Brandeis University
University of Bridgeport
Cabrini College
Caldwell University
California College of the Arts
California Institute of the Arts
Carnegie Mellon University
Cedar Crest College
Centenary College
Central Connecticut State University
Champlain College
Chestnut Hill College
Clarion University of Pennsylvania
Coastal Carolina University
University of Connecticut
Cornell University
The Culinary Institute of America
University of Dayton
Dean College
Delaware Valley College
University of Delaware
Drake University
East Stroudsburg University
Emerson College

Fairfield University
Fairleigh Dickinson University
Fashion Institute of Technology
Felician College
University of Findlay
Fisher College
Florida Atlantic University
Florida State University
Fordham University
George Mason University
The George Washington University
Georgian Court University
Gettysburg College
University of Hartford
Harvard University
Hofstra University
Indiana State University
Iona College
Ithaca College
James Madison University
Johns Hopkins University
Johnson & Wales University
Kean University
Keystone College
King's College
Kutztown University
Lafayette College
Lasell College
Le Cordon Bleu College of Culinary Arts
Lehigh University
Lesley University
LIM College
Long Island University
Loyola University Maryland
Manhattan College
Marist College
University of Maryland
Marymount Manhattan College

Massachusetts College of Pharmacy & Health Sciences
University Massachusetts
McDaniel College
Misericordia University
University of Mississippi
Mitchell College
Monmouth University
Montclair State University
Moravian College
Mount Saint Mary's University
Nazareth College
Neumann University
New England Conservatory of Music
University of New England
University of New Haven
New Jersey City University
New Jersey Institute of Technology
The College of New Jersey
New York Institute of Technology
New York University
Newbury College
Univ. of North Carolina at Charlotte
North Carolina State University
Northeastern University
Old Dominion University
Pace University
Pennsylvania State University
Philadelphia University
Pierce College
Plymouth State University
Pratt Institute
Princeton University
Purchase College, SUNY
Purdue University
Quinnipiac University
Ramapo College of New Jersey
Rensselaer Polytechnic Institute
University of Rhode Island

Rice University
Rider University
University of Rochester
Rowan University
Rutgers University
Sacred Heart University
Saint Peter's University
Savannah College of Art and Design
School of Visual Arts
University of the Sciences
University of Scranton
Seton Hall University
Skidmore College
Slippery Rock University of Penn.
University of South Carolina
University of Southern California
St. Francis College
St. John's University
Stevens Institute of Technology
SUNY Colleges - Albany, Buffalo & New Paltz
Stockton University
Stonehill College
Stony Brook University
Suffolk University
Susquehanna University
Syracuse University
The University of Tampa
Temple University
Towson University
The University of the Arts
Villanova University
Wagner College
Washington College
West Chester University
West Virginia University
Westminster Choir College
Widener University
Wilkes University
William Paterson University
York College of Pennsylvania