

2018-19 SY NJSLA Comparative and AP DATA



Office Of Curriculum & Instruction

The Office of Curriculum and Instruction directs Nutley Public School District's curriculum development and revision in accordance with the New Jersey Student Learning Standards and oversees district-wide professional development and mentoring.

Kent Bania

Director of Curriculum, Instruction, and Assessment (Gr. 6-12)

kbania@nutleyschools.org

Janine Hess Loconsolo

Director of Curriculum, Instruction, and Assessment (Gr. PK-5)

jloconsolo@nutleyschools.org

Curriculum and Instruction Resources

- NJ Student Learning Standards
- AchieveNJ
- NJ Student Learning Assessment (NJSLA)
 - NJDOE Digital Item Library
- NJ Graduation Requirements

NJ School Performance Reports

- Nutley School Performance Reports Presentation - Board of Education - January 22, 2018
- 2017-2018 NJDOE Summary Report Guide
- 2017-2018 NJDOE Performance Report Videos
- FAQ of NJ School Performance Reports
- Summary Report Guide
- Detailed Report Guide

Board Presentations

- 2018-2019 Student Assessment Data Presentation (September 23, 2019)
 - NJSLA Parent Resources
 - Understandthescore.com
- 2017-2018 NJDOE Performance Report Presentation (April 29, 2019)
- 2017-2018 Student Assessment Data Presentation (October 1, 2018)



**NJSLA, AP,
mSGP, Internal
Benchmarks,
SAT, ACT,**



**AREAS OF
FOCUS**

NJ Student Learning Assessment: NJSLA

The State of New Jersey has ended its membership of the interstate consortium that produced the Partnership for Assessment of Readiness for College and Careers (PARCC) assessments.

While the online platform remains the same, the statewide assessments for ELA and mathematics are now called the New Jersey Student Learning Assessments-ELA (NJSLA-ELA) and New Jersey Student Learning Assessment-Mathematics (NJSLA-M).



NJSLA Unit Times

Statewide Assessment Unit Times

This document has been updated as of March 2019.

ELA Units and Testing Times for Statewide Assessments¹

2019 NJSLA-ELA – ELA Grade 3

Unit	Unit Testing Time (Minutes)
Unit 1	75
Unit 2	75
Total: 2 Units	Total: 150 Minutes

2019 NJSLA-ELA – ELA Grades 4 & 5

Unit	Unit Testing Time (Minutes)
Unit 1	90
Unit 2	90
Total: 2 Units	Total: 180 Minutes

2019 NJSLA-ELA – ELA Grades 6 to 10²

Unit	Unit Testing Time (Minutes)
Unit 1	90
Unit 2	90
Total: 2 Units	Total: 180 Minutes

Mathematics Units and Testing Times for Statewide Assessments

2019 NJSLA-Mathematics Grades 3 to 5

Unit	Unit Testing Time (Minutes)
Unit 1	60
Unit 2	60
Unit 3	60
3 Units	180 Minutes

2019 NJSLA-Mathematics Grades 6 to 8

Unit	Unit Testing Time (Minutes)
Unit 1	60
Unit 2	60
Unit 3	60
3 Units	180 Minutes

2019 NJSLA High School Algebra I, Geometry & Algebra II²

Unit	Unit Testing Time (Minutes)
Unit 1	90
Unit 2	90
2 Units	180 Minutes

Science Units and Testing Times for Statewide Assessments

2019 NJSLA-Science Assessments Grade 5 & 8

Unit	Unit Testing Time (Minutes)
Unit 1	45
Unit 2	45
Unit 3	45
Unit 4	45
4 Units	180 Minutes

2019 NJSLA-Science Assessments Grade 11

Unit	Unit Testing Time (Minutes)
Unit 1	60
Unit 2	60
Unit 3	60
Unit 4	60
4 Units	240 Minutes



NJSLA Time Adjustments

2018 PARCC ELA Assessments – ELA Grades 4 and 5

Unit	Unit Testing Time (Minutes)
Unit 1	90
Unit 2	90
Unit 3	90
Total: 3 Units	Total: 270 Minutes

2018 PARCC Mathematics Assessments Grades 3-5

Subject(s)	Unit	Unit Testing Time (Minutes)
Math Grades 3-5	Unit 1	60
	Unit 2	60
	Unit 3	60
	Unit 4	60
Total	4 Units	240 Minutes

2019 NJSLA-ELA – ELA Grades 4 and 5

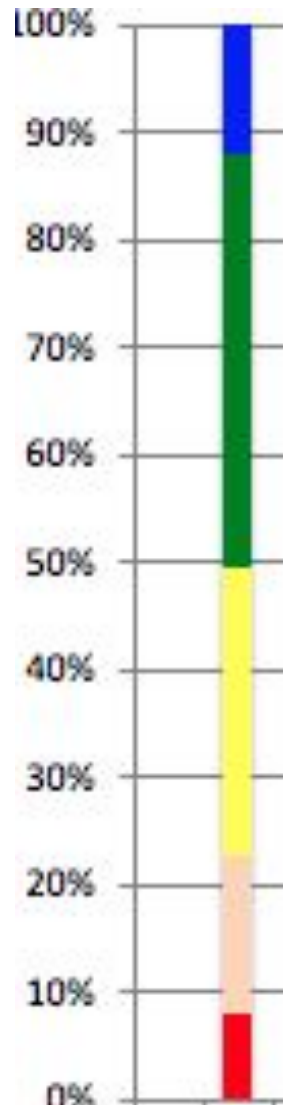
Unit	Unit Testing Time (Minutes)
Unit 1	90
Unit 2	90
Total: 2 Units	Total: 180 Minutes

2019 NJSLA-Mathematics Grades 3- 5

Subject	Unit	Unit Testing Time (Minutes)
Math Grades 3-5	Unit 1	60
	Unit 2	60
	Unit 3	60
Total	3 Units	180 Minutes



100% Stacked Columns



Blue - Level 5 - Exceeding Expectations

Green Level 4 - Met Expectations

Yellow - Level 3 - Approaching Expectations

Tan - Level 2 - Partially Met Expectations

Red - Level 1 - Did Not Meet Expectations

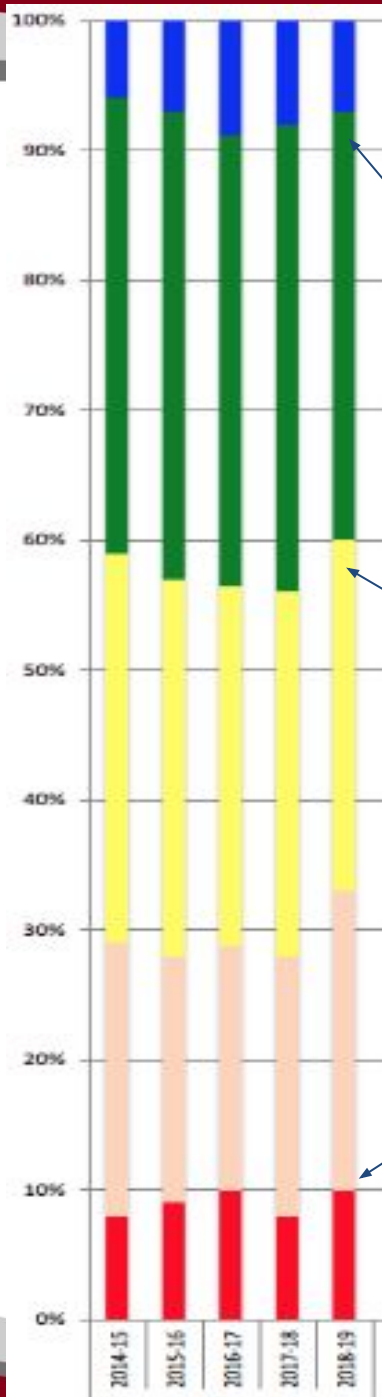


Growth Trend Data

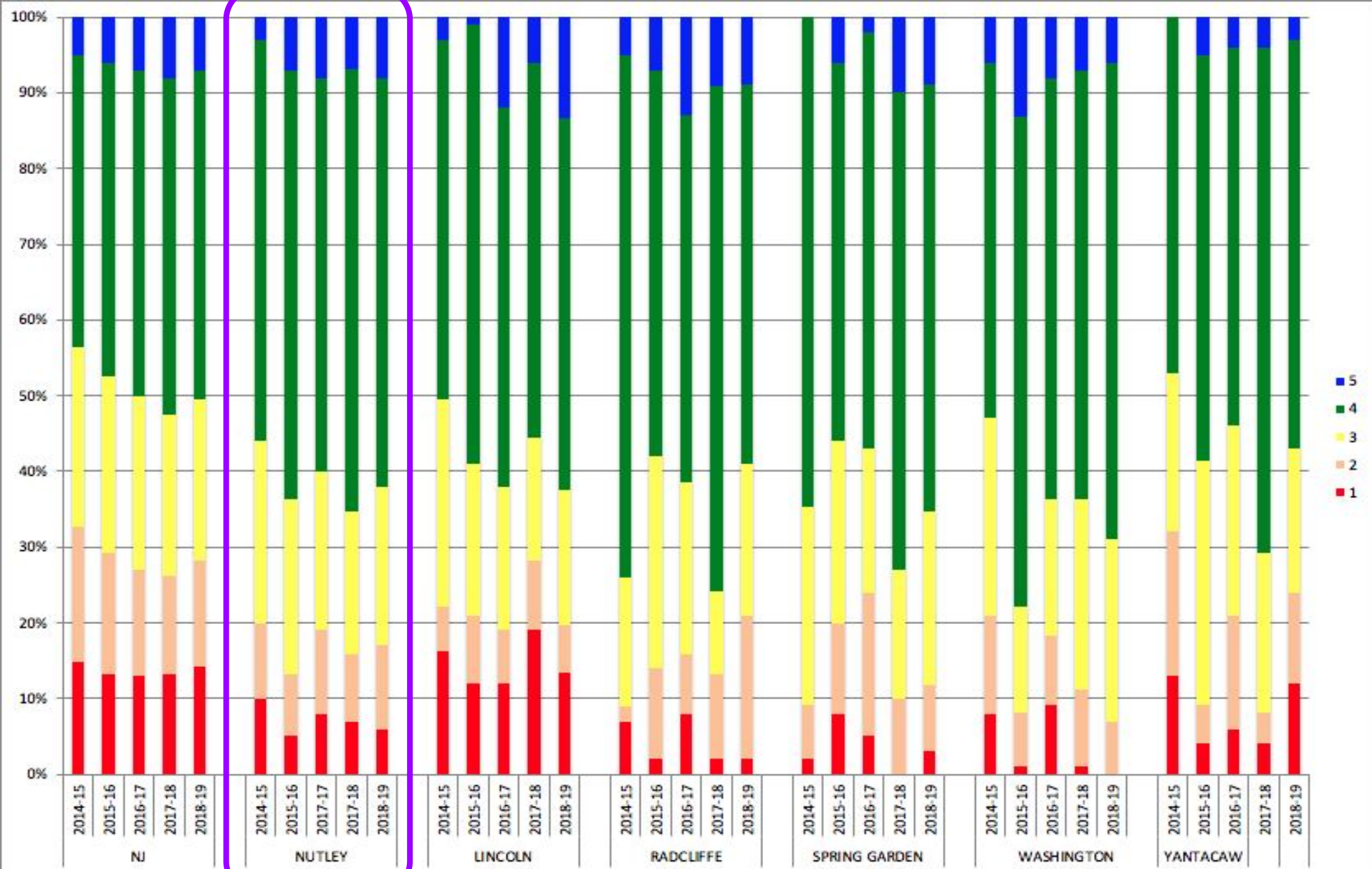
Possible look-fors:

- 5 Overall/Trend
- 4+ Overall/Trend
- 1 Overall/Trend

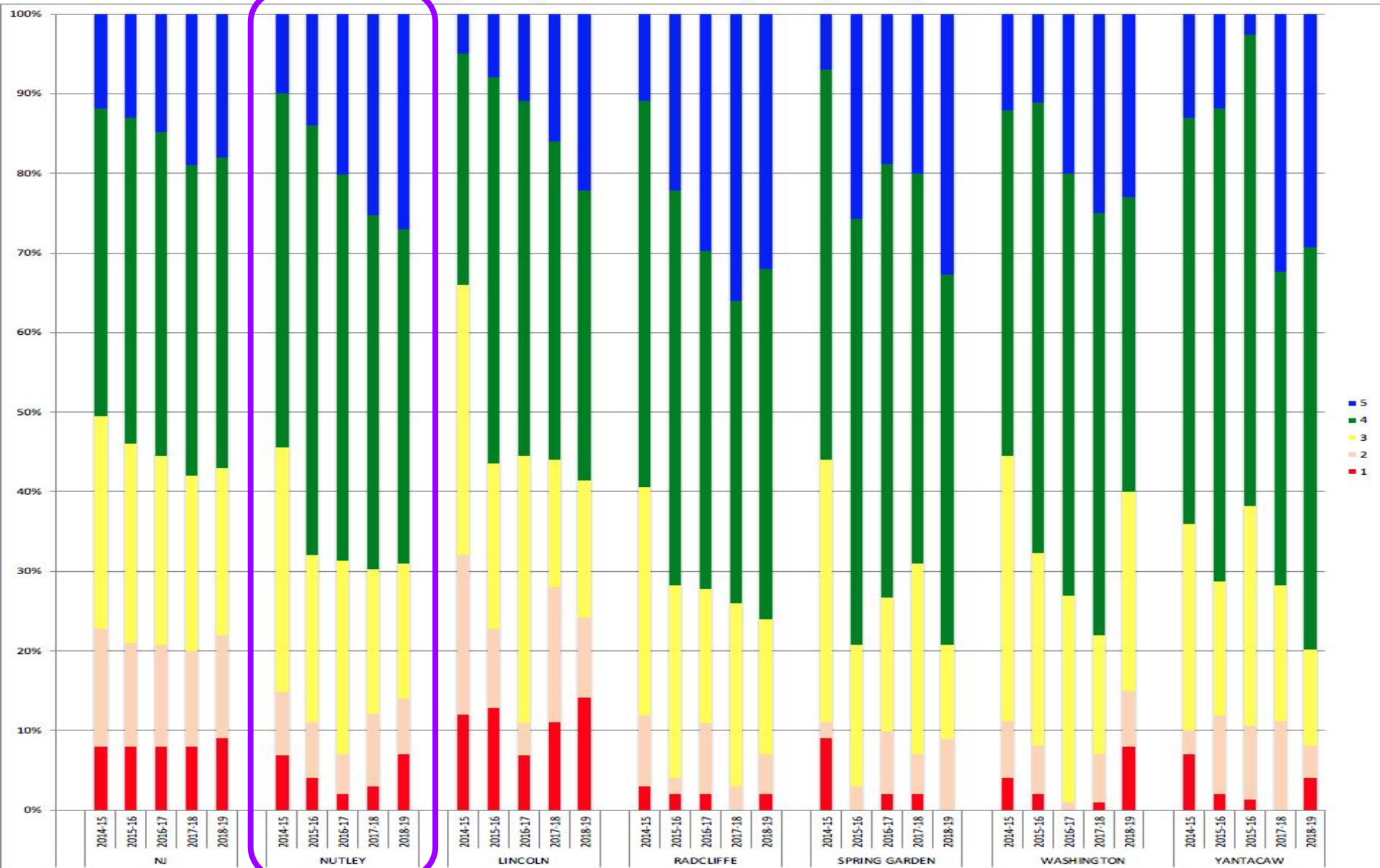
Growth Clusters: NJ,
District, Schools



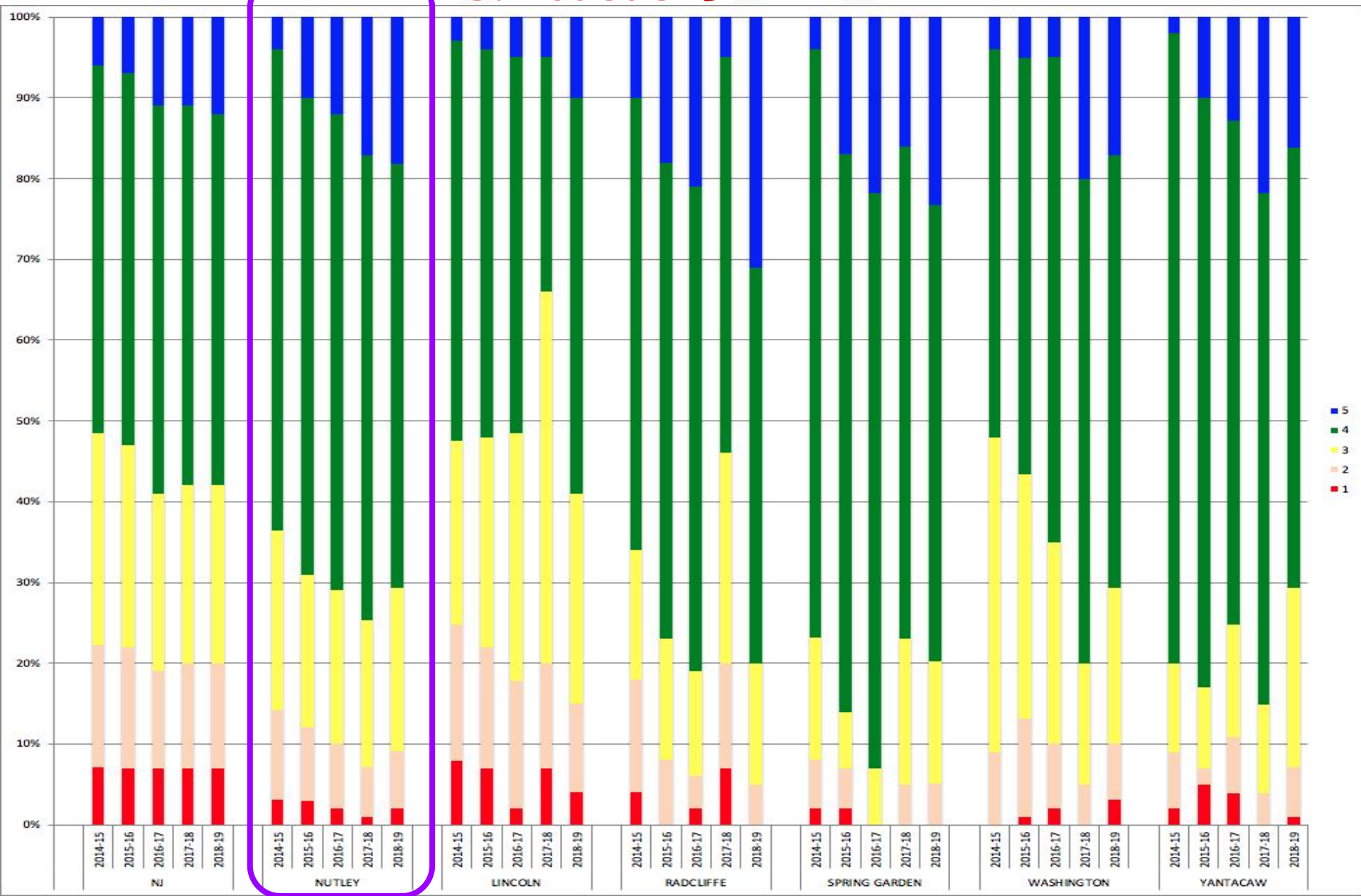
Grade 3 ELA



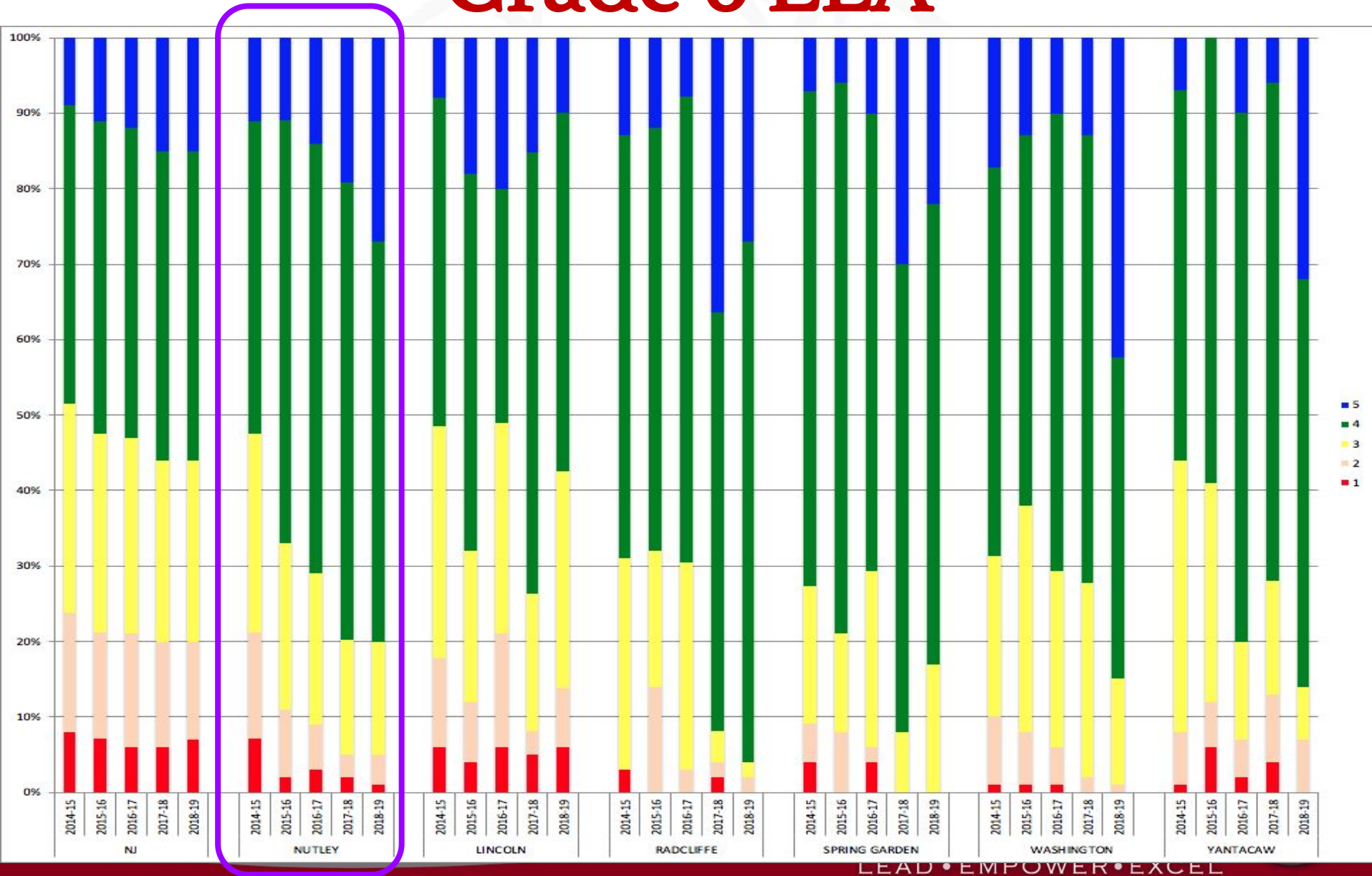
Grade 4 ELA



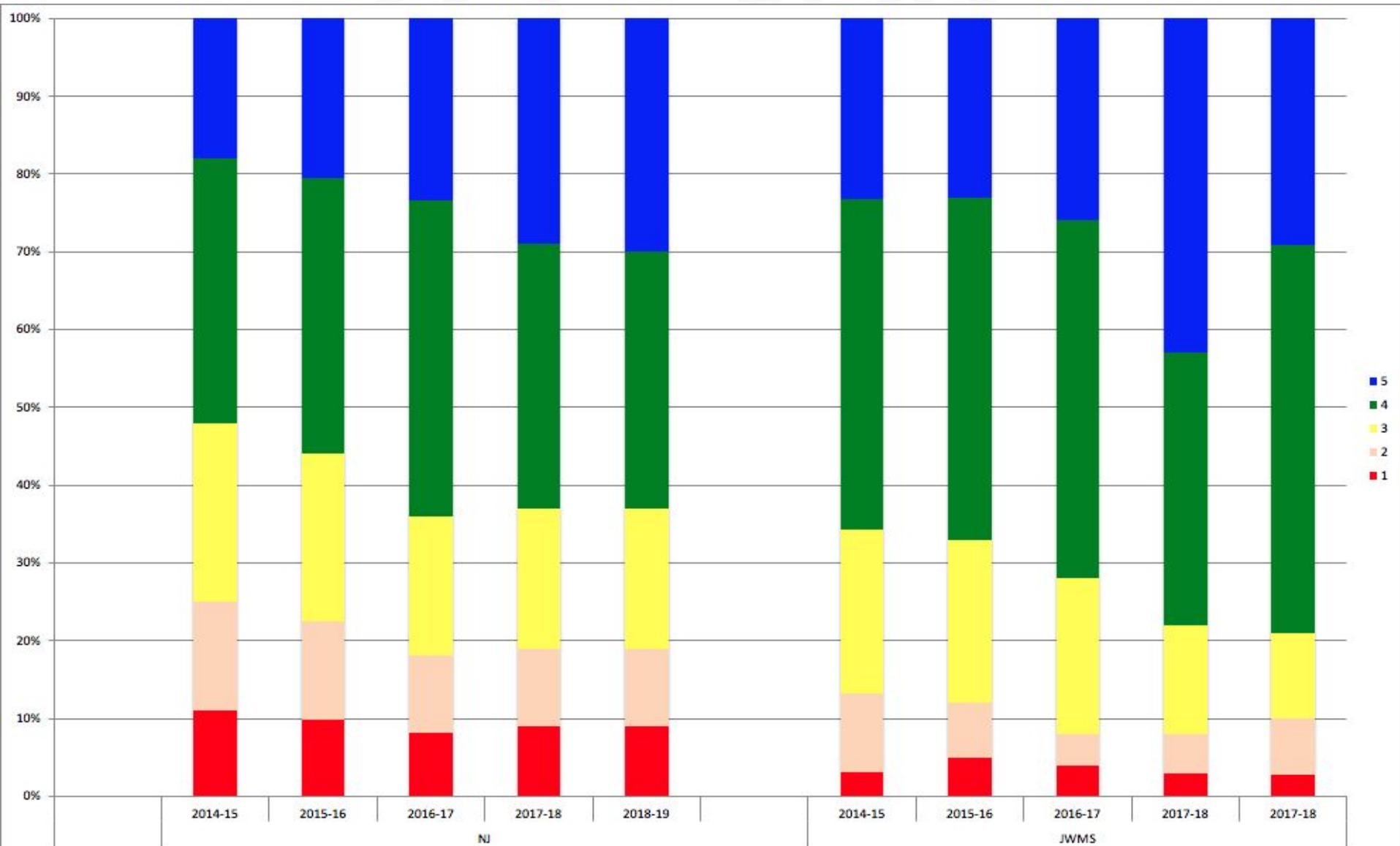
Grade 5 ELA



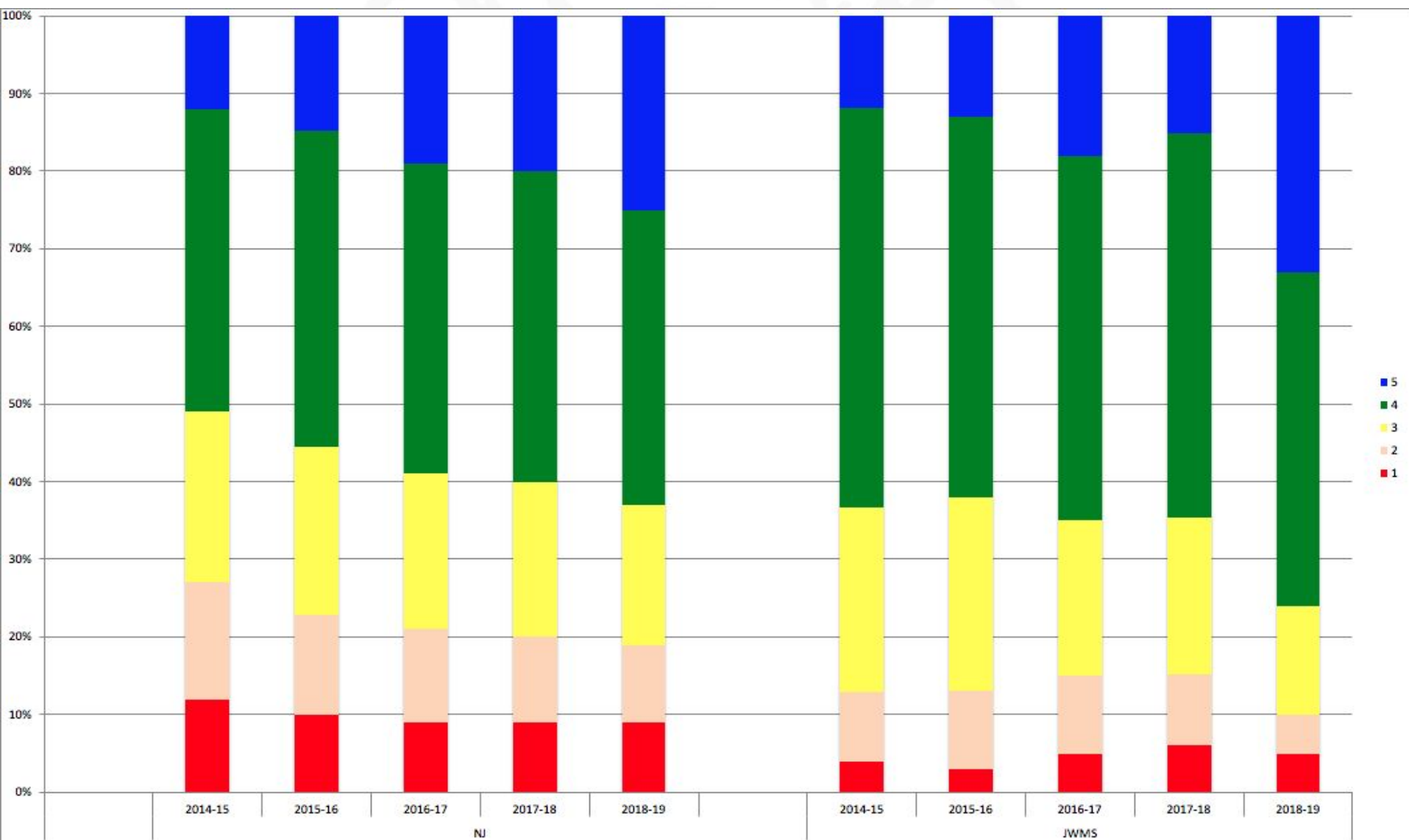
Grade 6 ELA



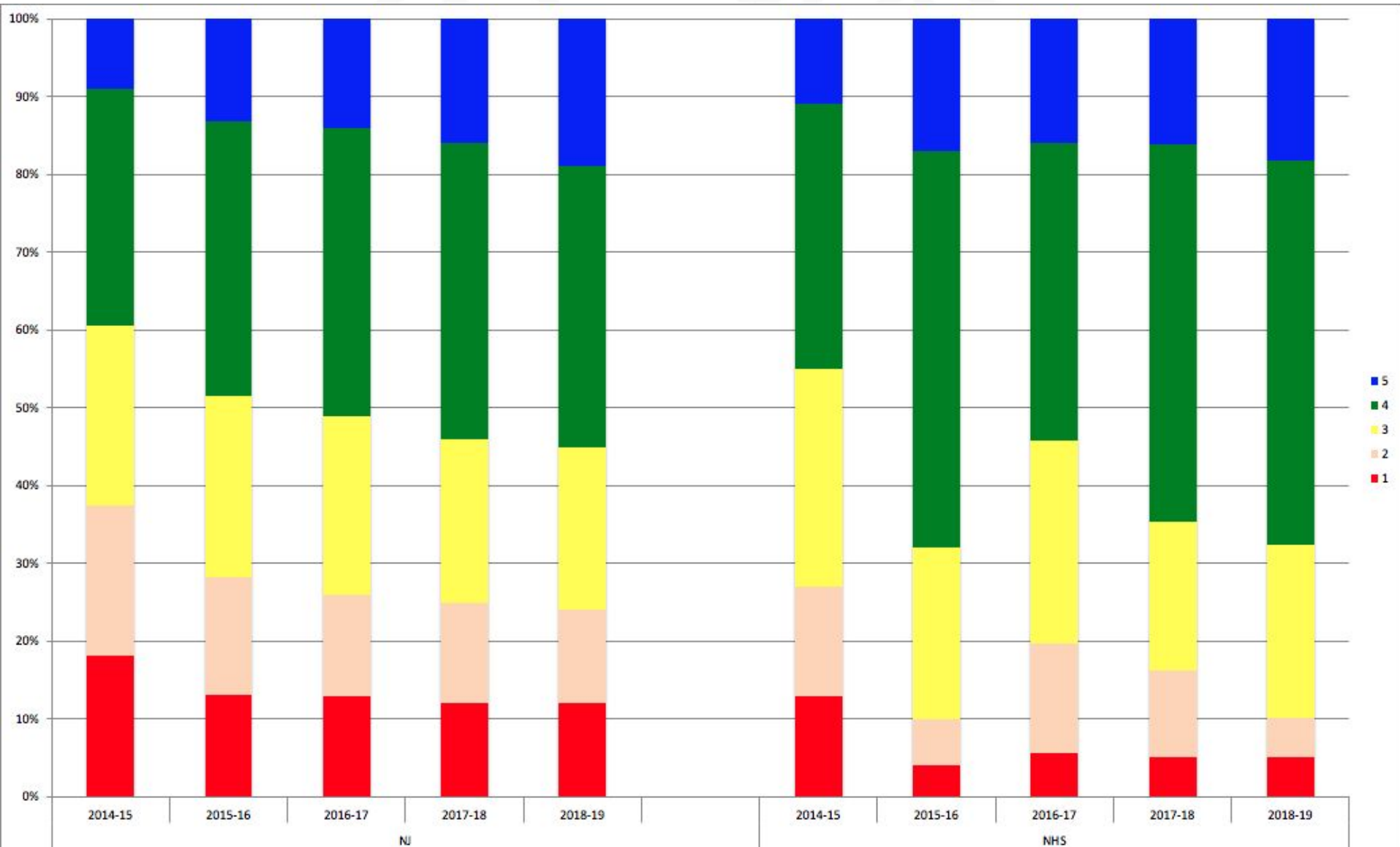
Grade 7 ELA



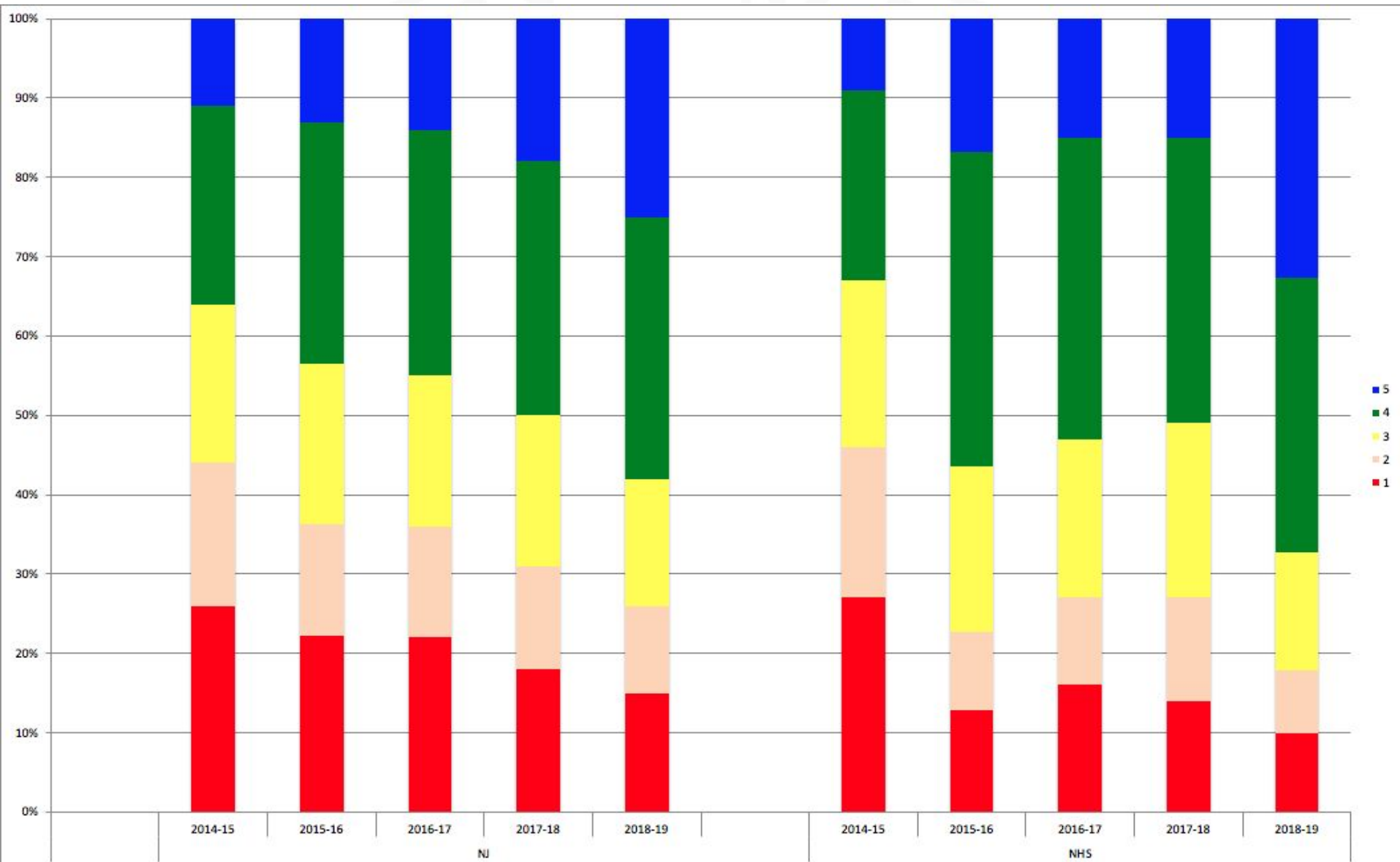
Grade 8 ELA



Grade 9 ELA



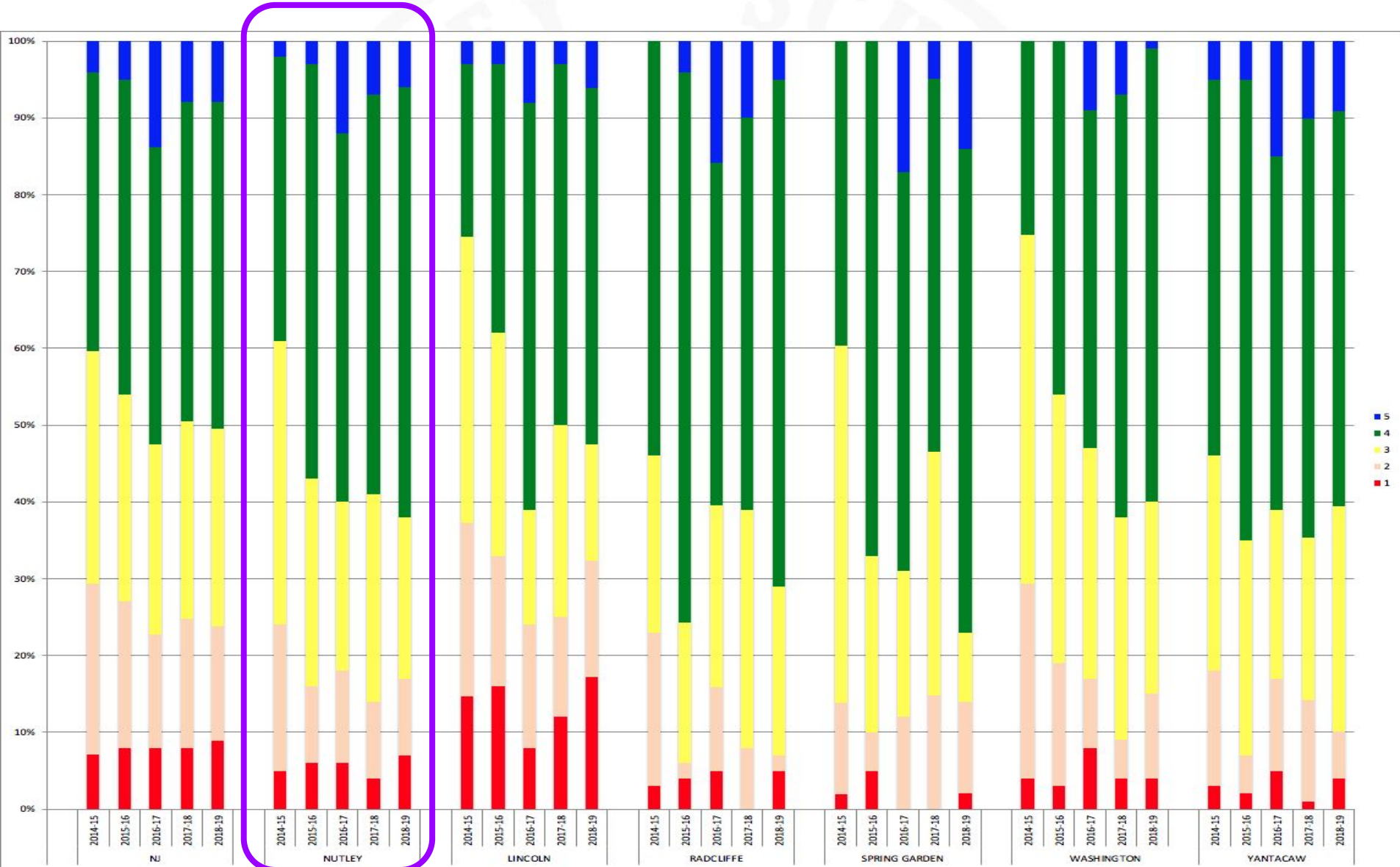
Grade 10 ELA



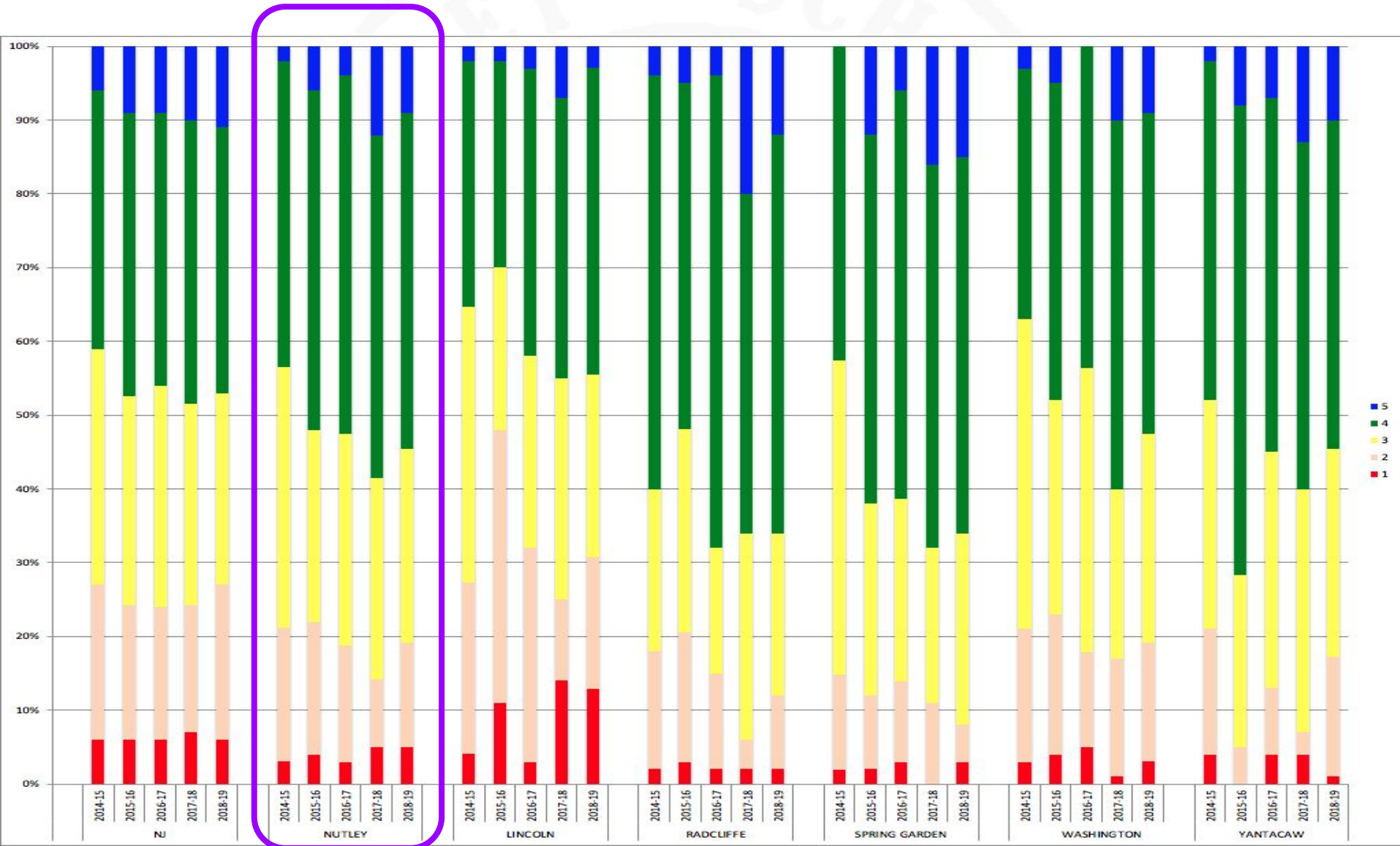
Grade 3 Math



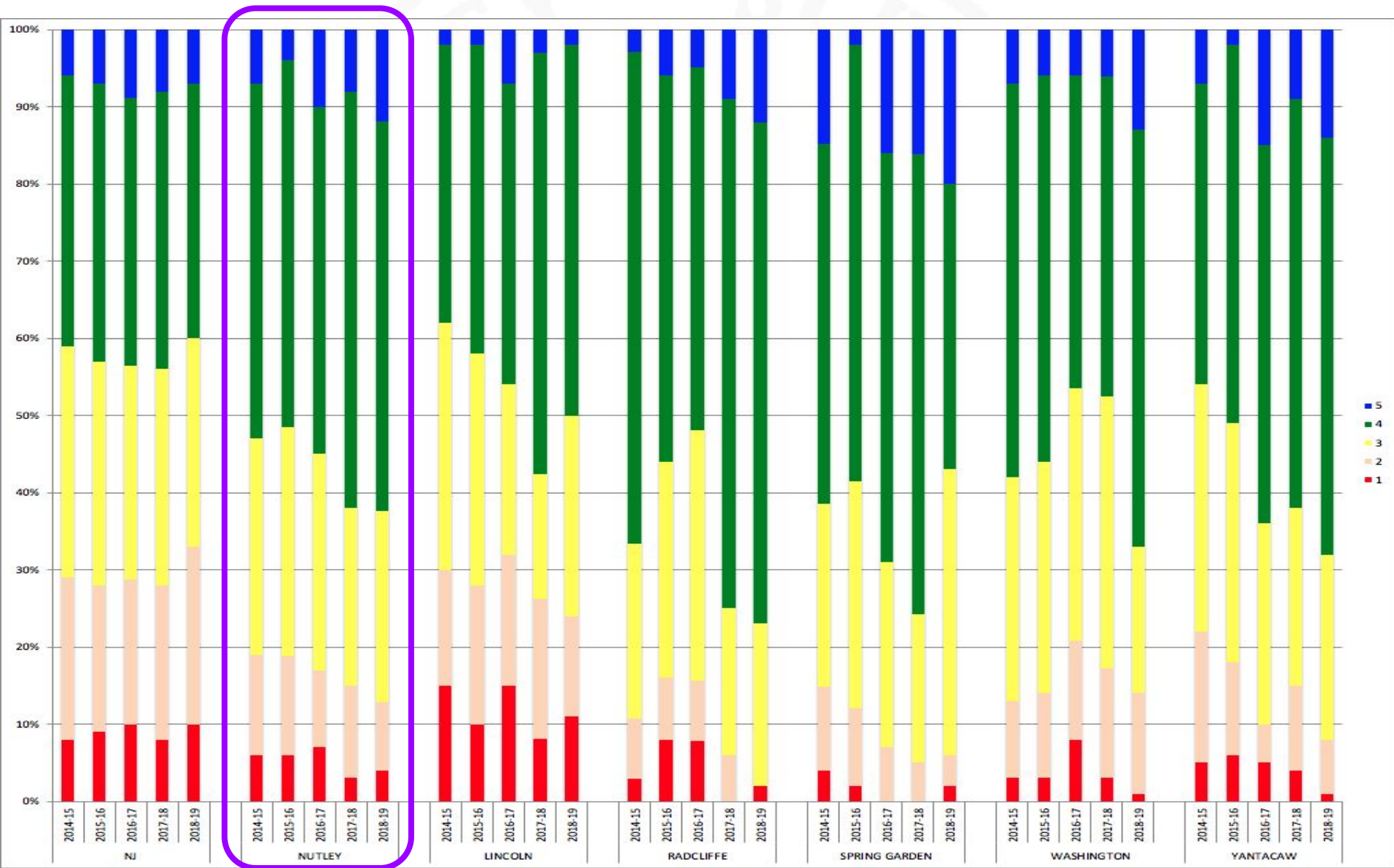
Grade 4 Math



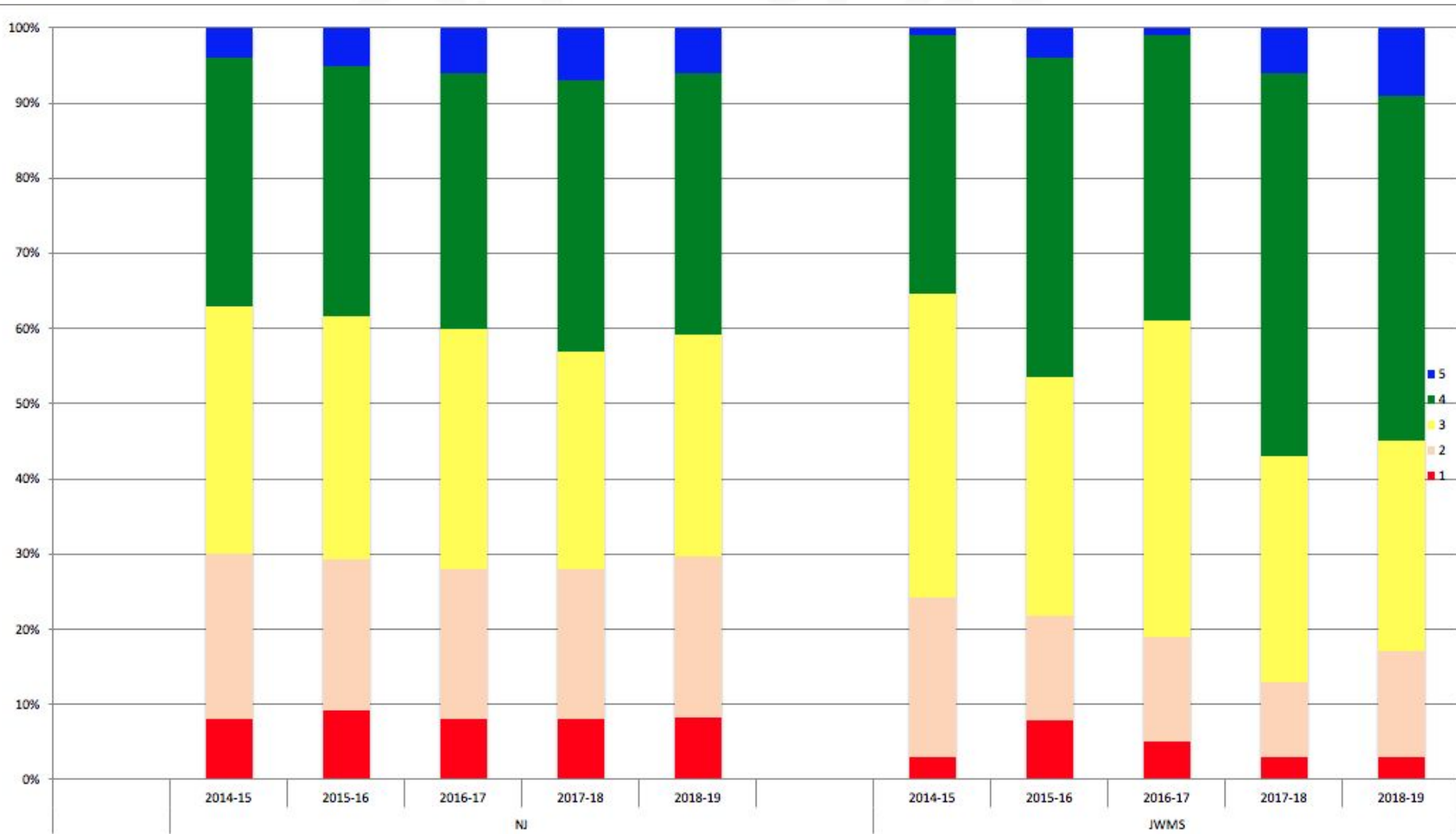
Grade 5 Math



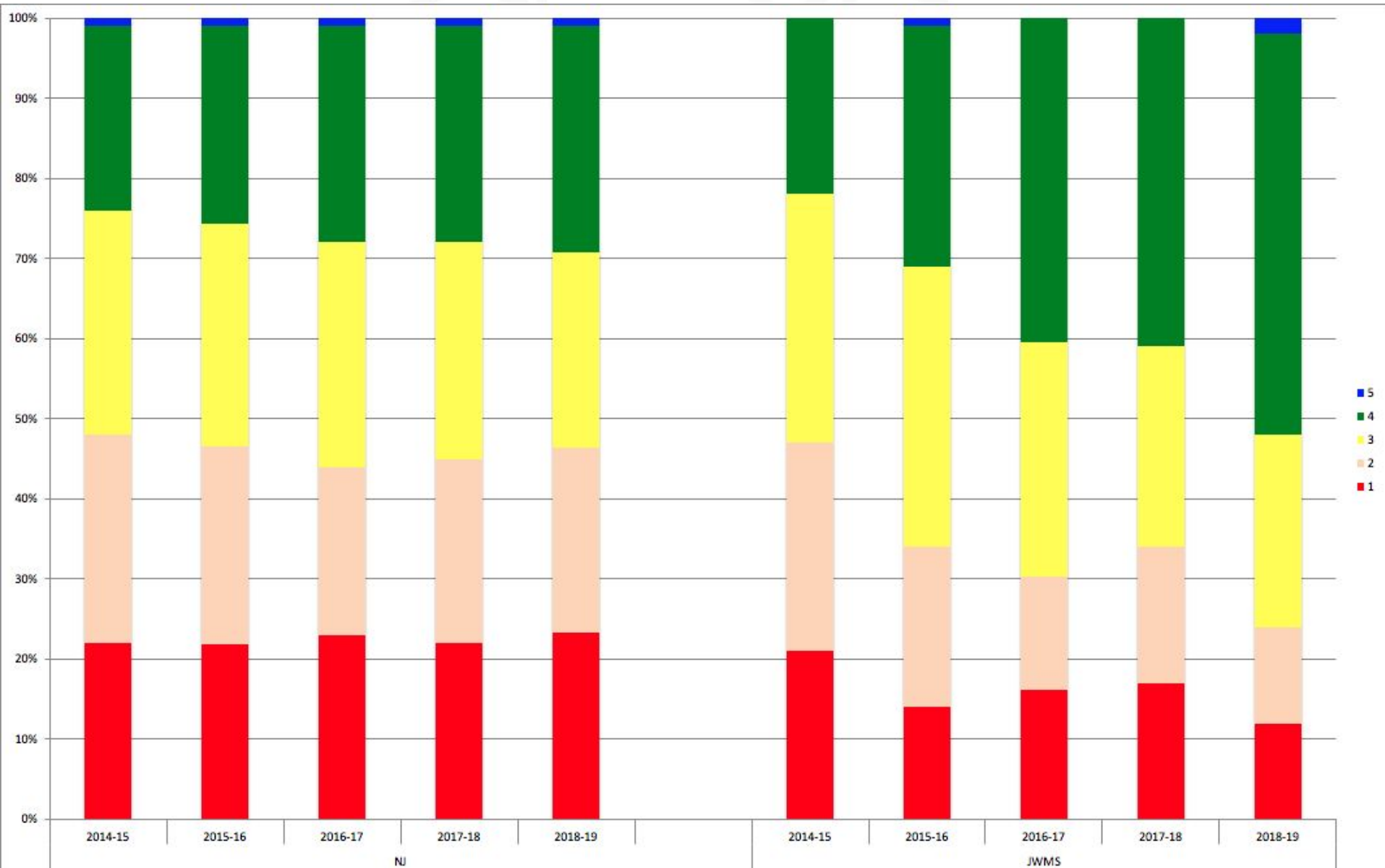
Grade 6 Math



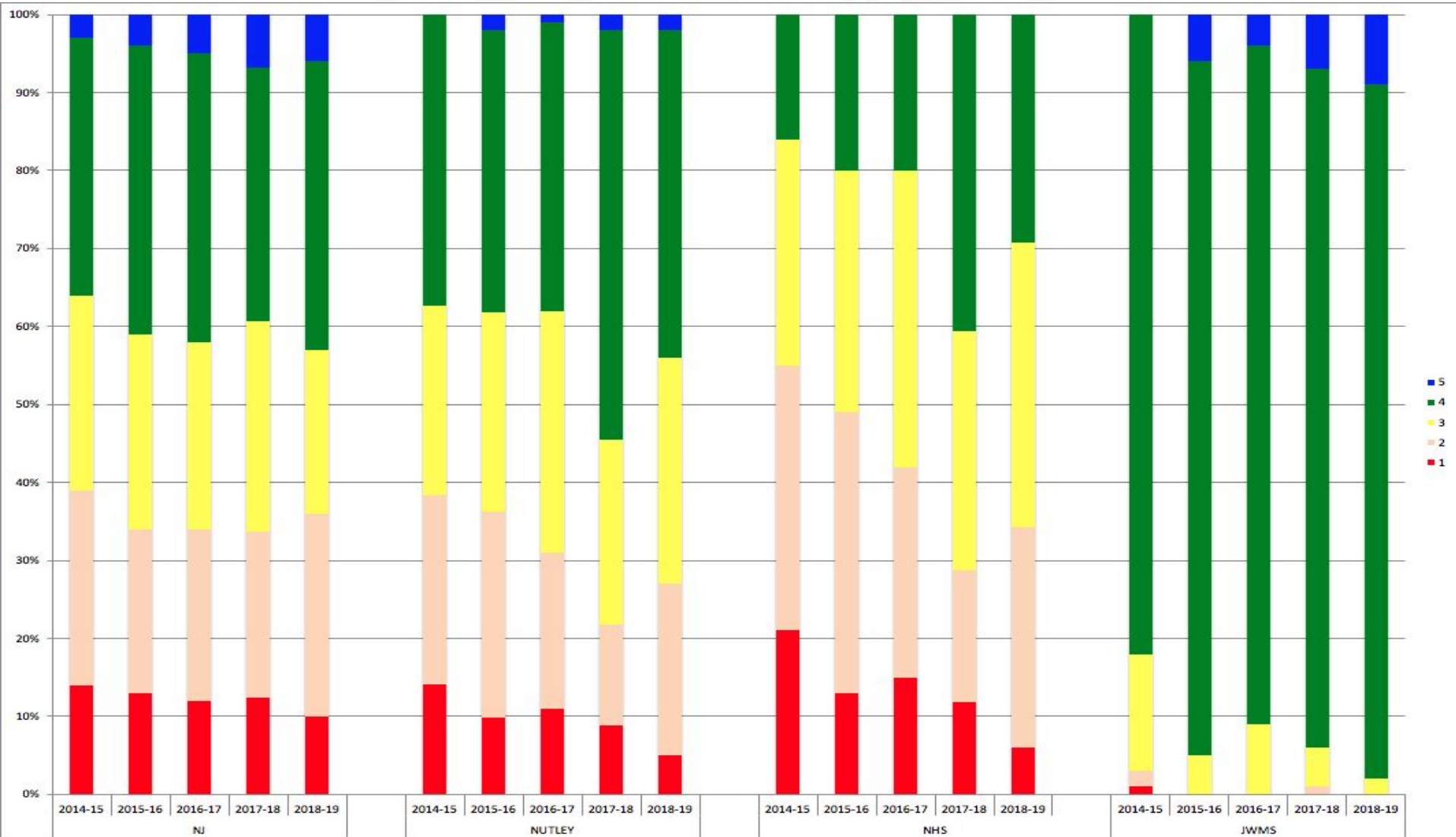
Grade 7 Math



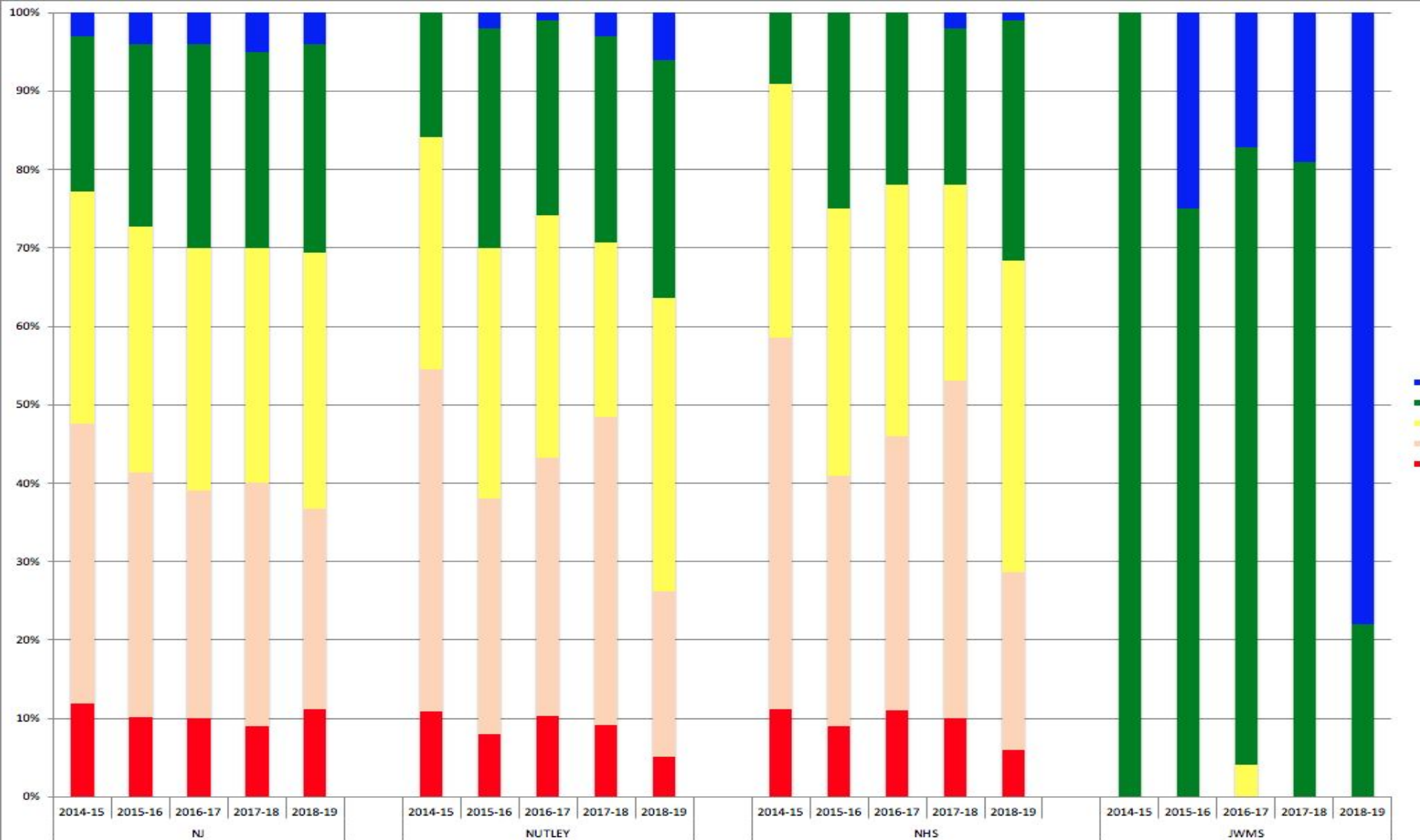
Grade 8 Math



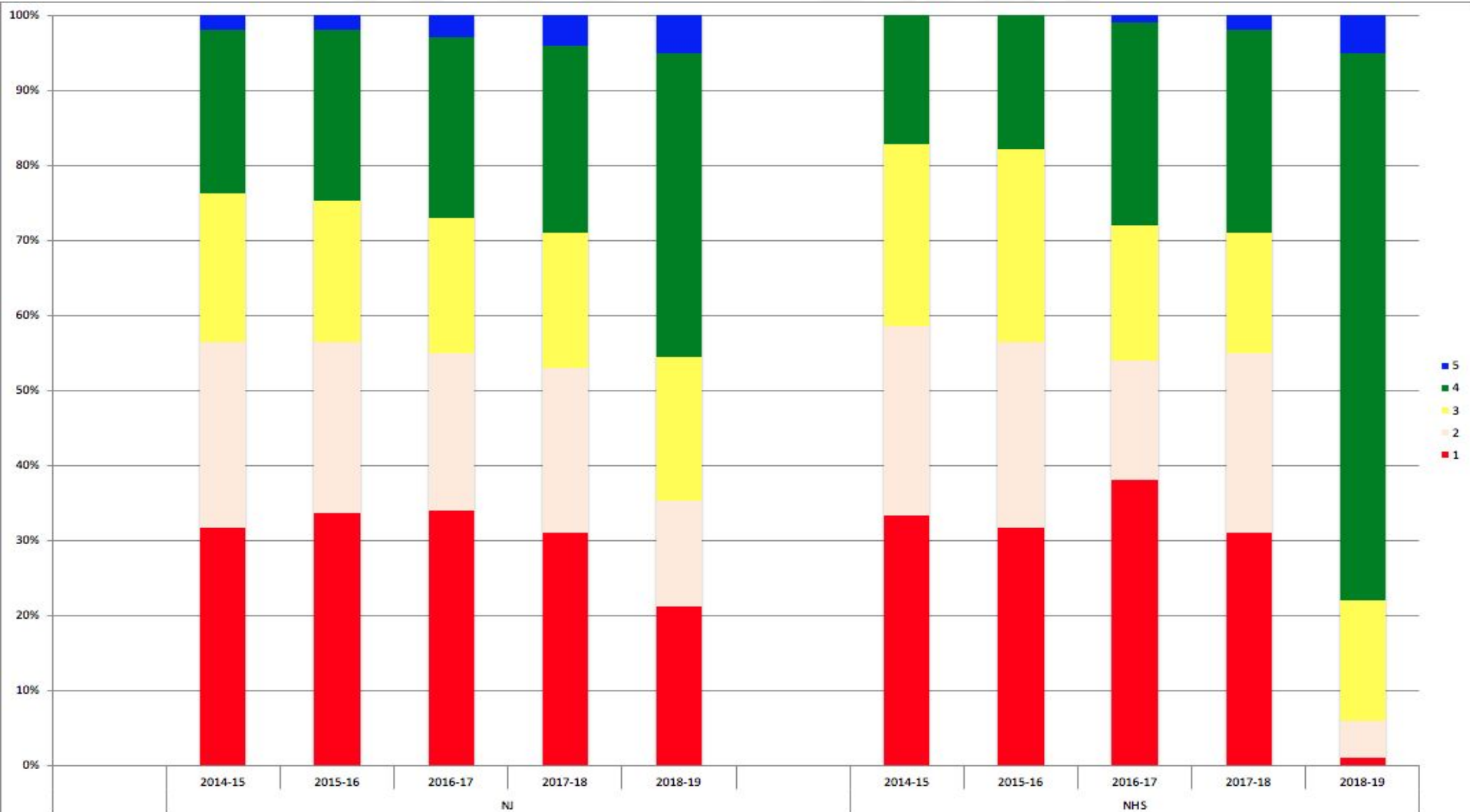
Algebra I



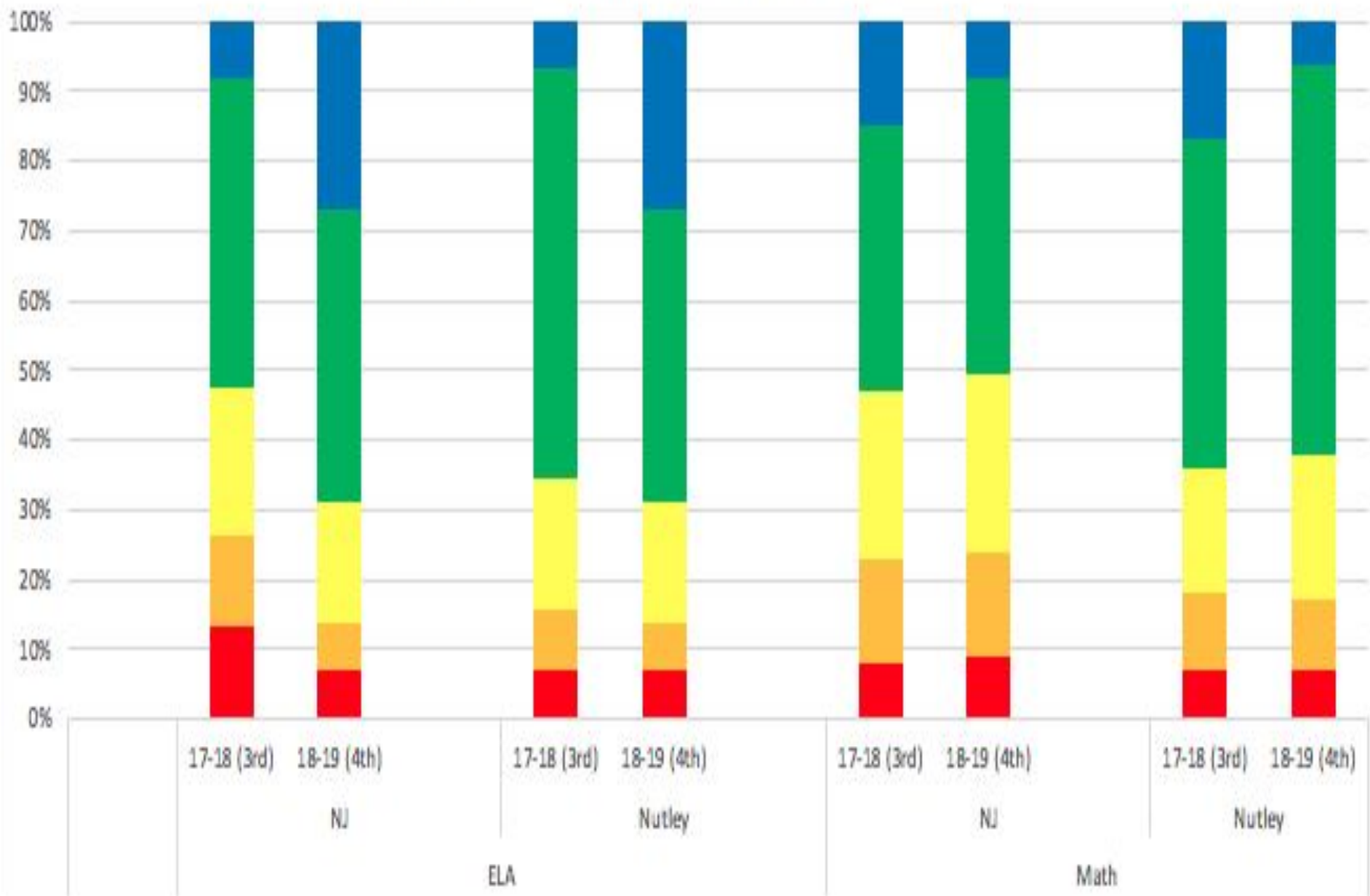
Geometry



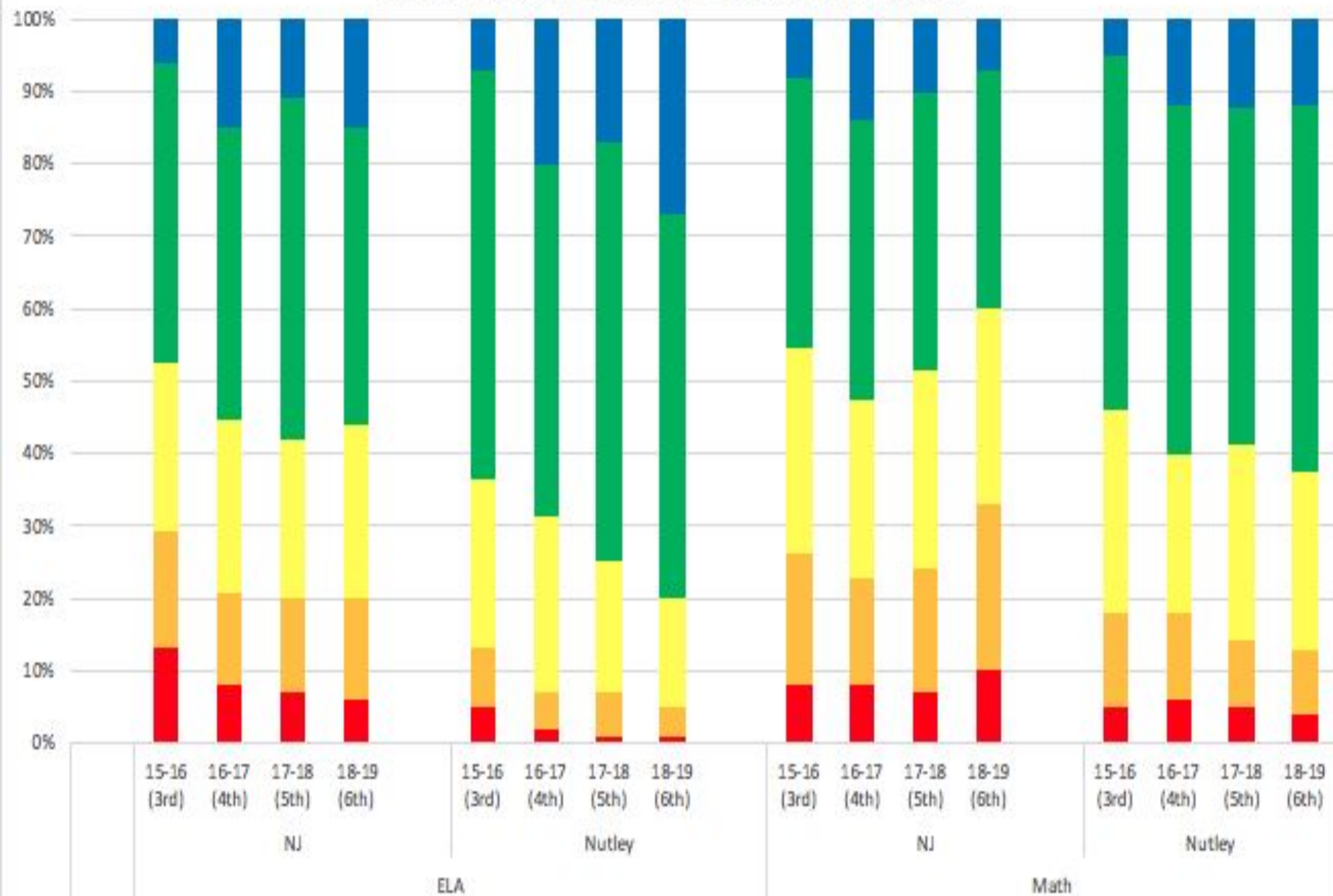
Algebra II



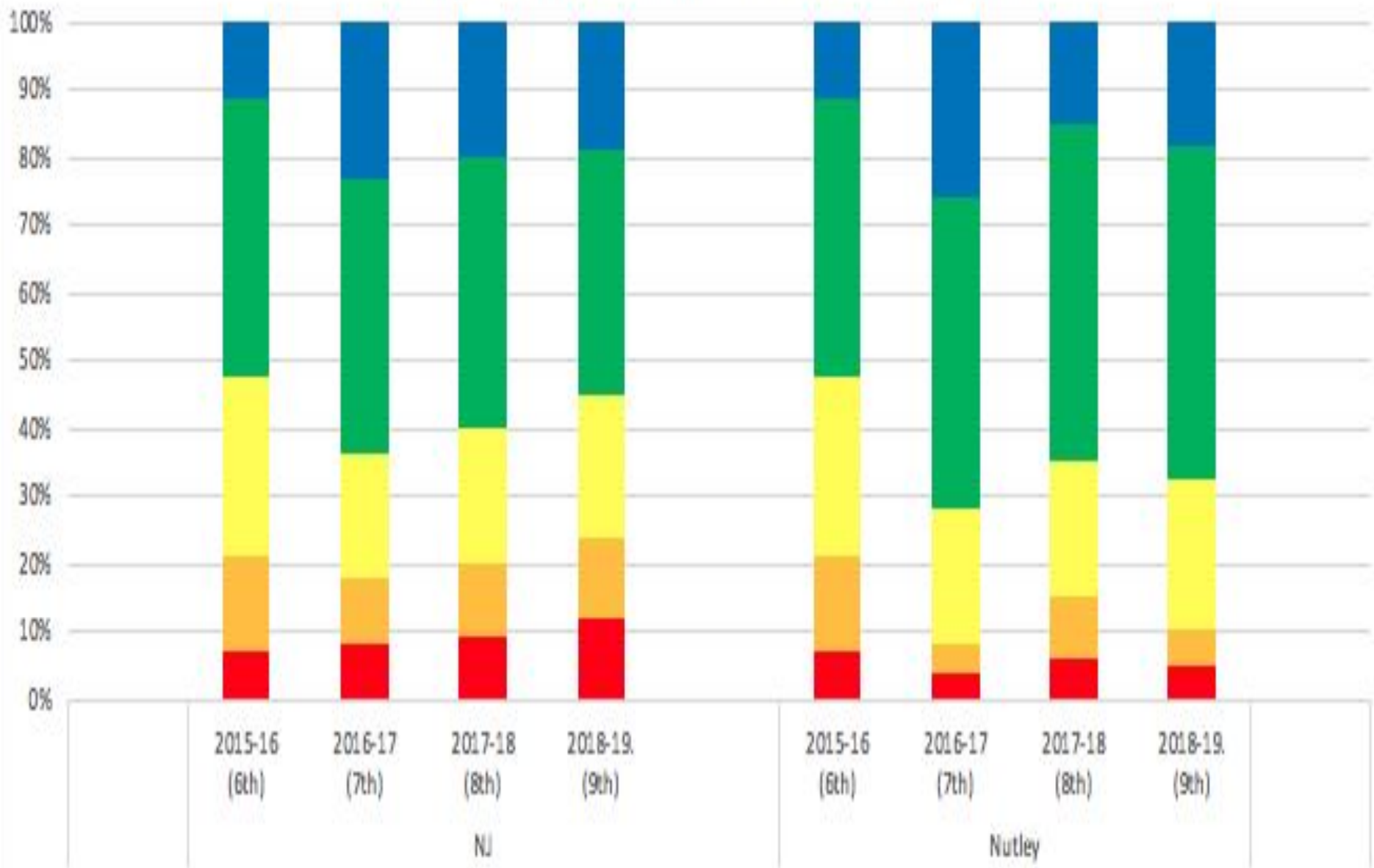
Current 5th Grade Students - Cohort Performance



Current 7th Grade Students - Cohort Performance



Current 10th Grade Students - ELA Cohort Performance



Next Steps:

- Data from the NJSLA is being used by district curriculum directors and coordinators to review curricula and ensure standards-aligned instruction.
- Data from the NJSLA is being analyzed by teachers and used to drive differentiated instruction.
- Individual Student Reports (ISR) will be mailed home to parents/guardians on Monday, September 30th.





GRADE 7 MATH

Mathematics Assessment Report, 2018–2019

This report shows whether FIRSTNAME met grade-level expectations and is on track for the next grade level or course. **This assessment is just one measure of how well your child is performing academically.**

Visit the NJ Parent Portal at nj-results.pearsonaccessnext.com and use the following code to access your child's performance results online.

VgsdyXWBYXD5

See side 2 of this report for specific information on your child's performance in mathematics.

How Can You Use This Report?

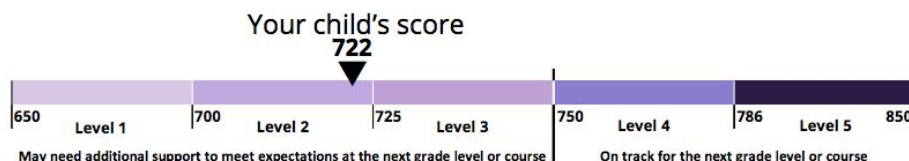
Ask your child's teachers:

- What do you see as my child's academic strengths and areas for improvement?
- How will you use these test results to help my child make progress this school year?

How Did FIRSTNAME Perform Overall?

Performance Level 2

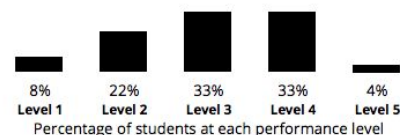
- Level 5 Exceeded Expectations
- Level 4 Met Expectations
- Level 3 Approached Expectations
- Level 2 Partially Met Expectations
- Level 1 Did Not Yet Meet Expectations



School Average 724
District Average 724
State Average 739



How Students in New Jersey Performed



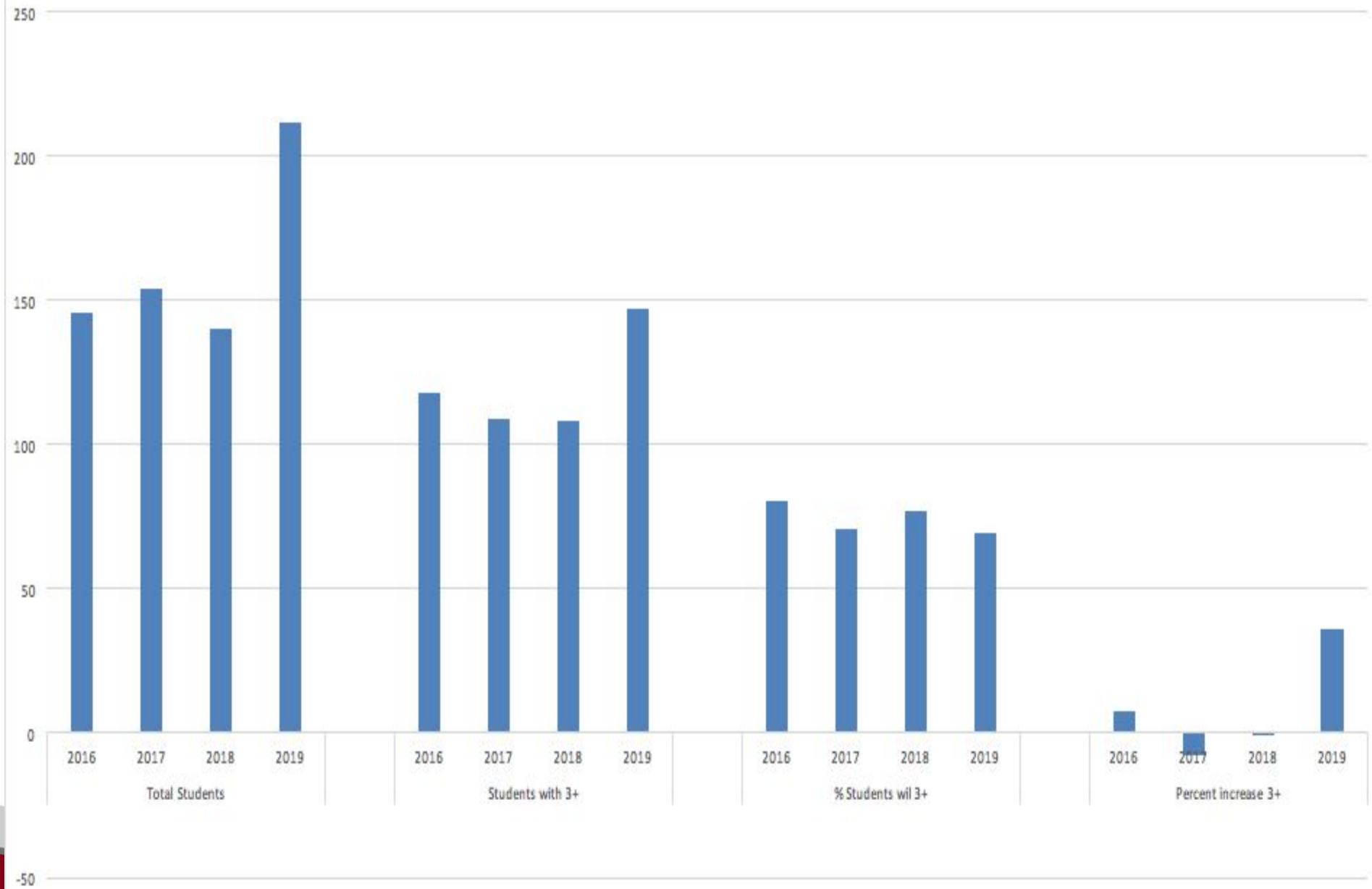
Student Growth Percentile

Your child's score this year is the same as or better than 43 percent of New Jersey students who had a similar score to your child on the assessment in a previous year(s).

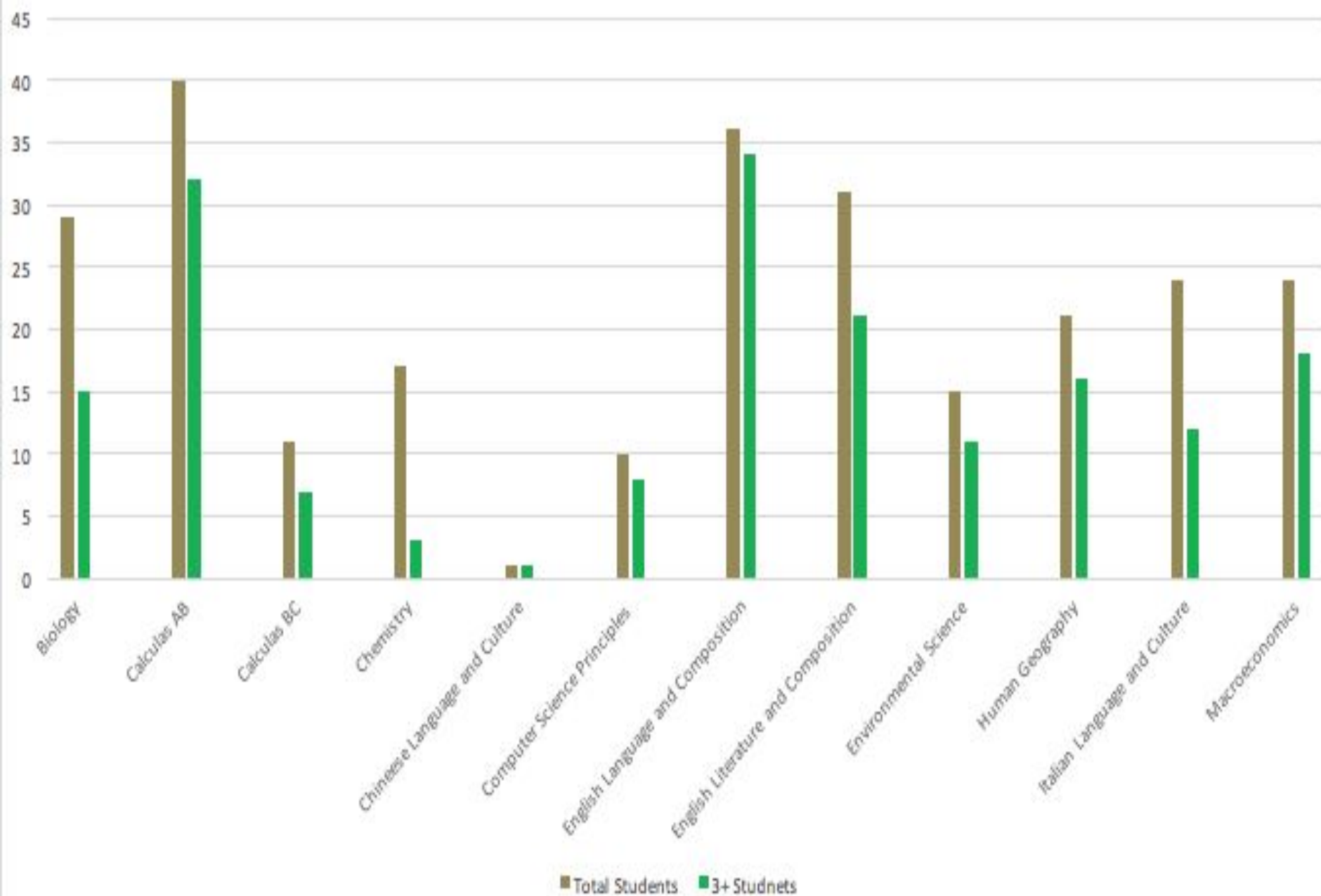
If your child took the assessment several times, under similar circumstances, your child would likely score within the range between the reported scale score plus or minus 6.1 points.



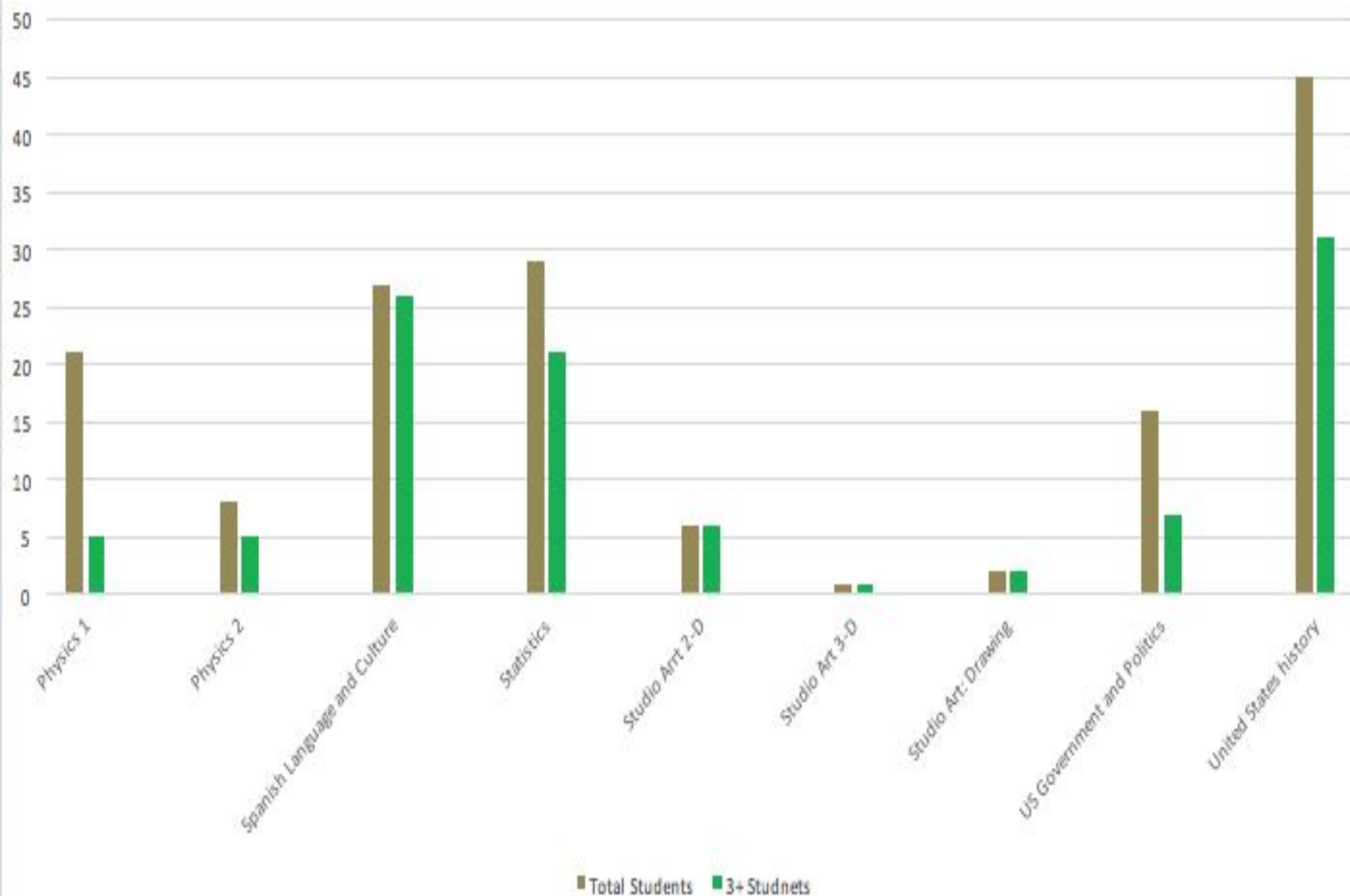
AP Comparative Data - Nutley



NHS Comparison of Total/3+ Students Per Subject



NHS Comparison of Total/3+ Students Per Subject



Criteria for Rankings

NJ Monthly

US News and World Report

Niche



NJ MONTHLY

(<https://njmonthly.com/articles/towns-schools/methodology-compile-top-schools/>)

Taken from NJ Performance Reports

School Environment:	<p>The sum of</p> <ul style="list-style-type: none">• Student/Faculty Ratio• # of AP courses offered• # of 11th or 12th graders taking AP courses (Higher Weighting)• % of students 9-12 taking visual/performing arts
Student Performance: (Higher Weighting)	<p>The sum of</p> <ul style="list-style-type: none">• Students scoring 1550 or better on SAT• % of students scoring 3+ on AP
Student Outcomes:	<p>The sum of</p> <ul style="list-style-type: none">• Four-year graduation rate• % of students enrolled in a 2/4 year college



US News and World Report High School Rankings

(<https://www.usnews.com/education/best-high-schools/articles/how-us-news-calculated-the-rankings>)

College Readiness (30%)	Proportion of a school's 12th graders that took and passed AP/IB exams. (Participation and Passing rate used(3+)
College Curriculum Breadth (10%)	Calculated among a school's 2016-2017 12th graders from the percentage who took and the percentage who passed multiple AP/IB exams.
Math and Reading Proficiency (20%)	The math and reading proficiency indicator is a simple measure of schools' student performance on these assessments.
Math and Reading Performance (20%)	The total assessment scores are compared with what U.S. News predicted for a school with its demographic characteristics in its state
Underserved Student Performance (10%)	Measure assessing learning outcomes only among black, Hispanic and low-income students.
Graduation Rate (10%)	This measure is the proportion who graduated four years later



“With the revamped methodology, most schools' ranks changed significantly between 2018 and 2019 because of the broader competition in terms of the number of schools being newly ranked – more than 14,500. Consequently, a school's rise or fall in the 2019 rankings does not necessarily reflect a difference in its underlying data. Since the methodology changed so significantly this year, a school's ranking in the 2019 Best High Schools ranking can't be compared with its rankings in any previous U.S. News ranking.”

- Editors at US News and World Report



Niche Criteria

Factor	Description	Source	Weight
Academics Grade	Based on state assessment proficiency, SAT/ACT scores, and survey responses on academics from students and parents.	Multiple Sources	60.0%
Culture & Diversity Grade	Based on racial and economic diversity and survey responses on school culture and diversity from students and parents.	Multiple Sources	10.0%
Parent/Student Surveys on Overall Experience	Niche survey responses scored on a 1-5 scale regarding the overall experience of students and parents from the school.	Self-reported by Niche users	10.0%
Teachers Grade	Based on teacher salary, teacher absenteeism, state test results, and survey responses on teachers from students and parents.	Multiple Sources	10.0%
Clubs & Activities Grade	Based on expenses per student and survey responses on clubs and activities from students and parents.	Multiple Sources	2.5%
Health & Safety Grade	Based on chronic student absenteeism, suspensions/expulsions, and survey responses on the school environment from students and parents.	Multiple Sources	2.5%
Resources & Facilities Grade	Based on expenses per student, staffing, and survey responses on facilities from students and parents.	Multiple Sources	2.5%
Sports Grade	Based on the number of sports, participation, and survey responses on athletics and athletic facilities from students and parents.	Multiple Sources	2.5%

