



2018-19 New Jersey School Performance Reports: Summary Report Guide

About the Report and this Guide

New Jersey School Performance Summary Reports provide families, educators and the public valuable information about how a school is doing across several sections: academic progress, college and career readiness, etc. The Summary Reports compare school performance to overall state performance and state targets.

The New Jersey Department of Education (NJDOE) encourages families, educators and broader community members to use the performance reports to help start conversations by asking questions such as, “How is our school doing relative to other schools?” or “Are all our students making progress from last year?”

The Summary Reports provide a more reader-friendly companion to the [New Jersey School Performance Reports](#), which provide additional information (i.e. student group performance and student access to arts, advanced placement courses, career and technical education, etc.). This guide provides a brief explanation of the Summary Report.

Summary Reports are available for all accountable schools, or schools that are held accountable for student test scores and/or chronic absenteeism rates. Special services schools and shared-time county vocational schools do not have Summary Reports because they are not held accountable for student test scores or chronic absenteeism rates.

Understanding the Summary Report

New Jersey PK-8 School
2018-2019

1 County: County Name
District: District Name
Principal: Principal Name
School Address
City, NJ 99999
[School Website](#)
(555)555-5555

2 Total students: **602**
• Economically Disadvantaged: **0.2%** • Grades offered: **KG-8**
• Students with Disabilities: **14.4%** • Student to Teacher Ratio: **10:1**
• English Learners: **4.8%** • Teacher Average Experience (years): **12.2**

3 • This school requires comprehensive support.

- 1. School and District Contact Information:** Address, website and phone number
- 2. Student and Teacher Information:** General information about the students and teachers in the school and district
- 3. Comprehensive or Targeted Support:** Lists whether the school requires comprehensive or targeted support from the NJDOE (school-level reports) or any schools in the district require support (district-level reports).



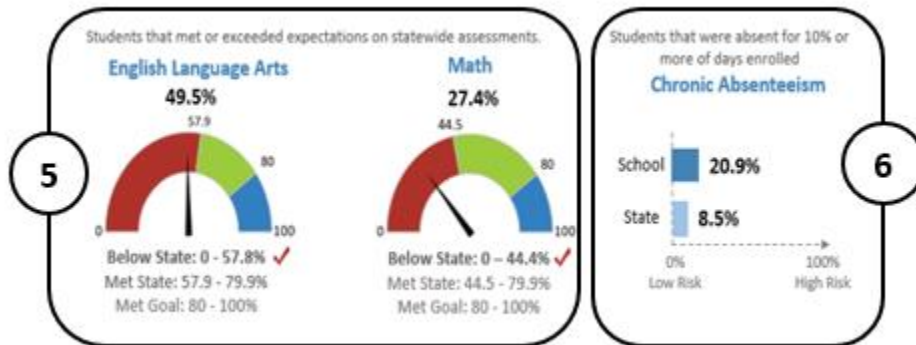
School Highlights Reported by the District

4

- Small graduation cohorts and individualized instruction in all grades 9-12.
- Courses that expand the world-wide web with access to countless curriculum options through virtual schooling.
- Intellectual and compassionate staff that recognize students as driven, engaged and forward thinking.

4. **School Highlights (School-level reports only):** This section provides highlights collected directly from school districts. This allows schools to share information, in their own words, about their school, programs, students, and/or staff, which can be used along with the other information in this report.

How Did Students Perform on Assessments and Are Students at Risk?



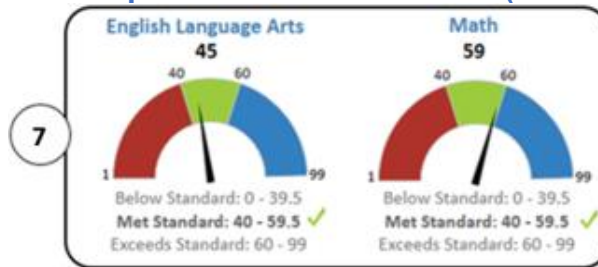
5. **English Language Arts and Mathematics Assessments:** This section shows the percentage of students who met or exceeded expectations on the 2018-19 statewide assessments in English Language Arts (ELA) or mathematics. A school or district that is listed as:

- **Met Goal** is meeting New Jersey’s long-term goal of having at least 80% of students meeting or exceeding expectations.
- **Met State** has met or exceeded the state average in the subject (ELA or mathematics), but has not yet met New Jersey’s long-term goal. In ELA, this means the school or district has at least 57.9% but fewer than 80% of students meeting or exceeding expectations. In mathematics, this means the school or district has at least 44.5% but fewer than 80% of students meeting or exceeding expectations.
- **Below state** has not met the state average for students meeting or exceeding expectations. In ELA, this means the school or district has fewer than 57.9% of students meeting or exceeding expectations. In mathematics, this means the school or district has fewer than 44.5% of students meeting or exceeding expectations.

6. **Chronic Absenteeism:** This section shows the percentage of students who were chronically absent, which is defined as being absent for 10% or more of the days they were enrolled during the 2018-19 school year, as compared to the percentage across the state. The state percentage shown will differ based on the grades served by the school.



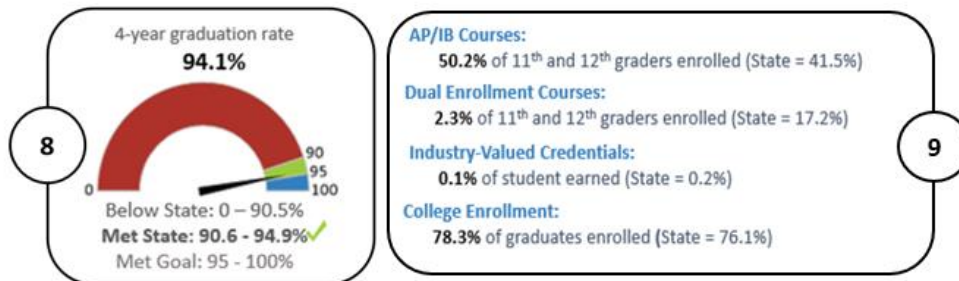
How Does Student Growth Compare to Other Students? (PK-8 reports only)



7. ELA and Mathematics Growth: This section shows the median student growth percentile (mSGP) for ELA and mathematics for the 2018-19 school year. Each student gets a student growth percentile (SGP) from 1 to 99 for English (grades 4 through 8) and mathematics (grades 4 through 7) that explains their progress compared to other students who had similar test scores in the past. If the SGPs for all students in the school are ordered from smallest to largest, the mSGP is the percentile in the middle of the list. A school or district that is listed as:

- **Exceeds Standard** has an mSGP of at least 60.
- **Met Standard** has an mSGP between 40 and 59.5.
- **Below Standard** has an mSGP less than 40.

Are Students Graduating and Are Students College and Career Ready? (High school reports only)



8. Graduation: This section shows the four-year graduation rate for Cohort 2019. A school or district that is listed as:

- **Met Goal** has a graduation rate that meets or exceeds New Jersey’s long-term goal of 95%.
- **Met State** has met or exceeded the statewide graduation rate, but has not yet met New Jersey’s long-term goal. This means the school or district graduation rate is at least 90.6% but less than 95%.
- **Below State** has a graduation rate less than 90.6%.

9. College Course-Taking and Enrollment: This section shows how students in this school and district have demonstrated college and career readiness compared to the state:

- **AP/IB Courses:** The percentage of 11th and 12th grade students who were enrolled in Advanced Placement (AP) or International Bacclaireate (IB) coursework during the 2018-19 school year.
- **Dual Enrollment Courses:** The percentage of 11th and 12th grade students who were enrolled in dual-enrollment coursework during the 2018-19 school year.
- **Industry-Valued Credentials:** The percentage of students in grades 9 through 12 that earned [industry-valued credentials](#) during the 2018-19 school year.
- **College Enrollment:** The percentage of Class of 2018 graduates who were enrolled in college by the fall of 2019.

Visit the [Reference Guide](#) for detailed explanations about how the data was collected or calculated.