



Nutley High School

2016-2017 Profile



Nutley High School

CEEB Code: 311035

Administration

Julie Glazer
Superintendent

Denis Williams
Principal

Joseph Materia
Vice Principal

Jacquelyn Devore
Vice Principal

Jill Divilio
*Director of School
Counseling*

Joseph Piro
Athletic Director

School Counselors

Meredith Gerckens
Persis Mehta
Kathryn Mitchell
Victoria Paino
Sherrie Tolve
Carrie-Anne Vos

Nutley High School

300 Franklin Avenue
Nutley, NJ 07110

(973) 661-8832

www.nutleyschools.org

COMMUNITY PROFILE

Nutley Township, a suburban residential community of approximately 28,000, is located in a large metropolitan area, which affords its residents the historical and cultural advantages of New York City, while retaining a residential ambiance. Several parks complement the single family dwellings on tree-lined streets and the centrally located business district. One quarter of Nutley's working population is employed in professional occupations while the remainder is employed in clerical, managerial, and skilled labor positions. Approximately 46% of our parents hold at least one college degree.

SCHOOL PROFILE

Nutley High School, accredited by the Middle States Association of Colleges and Schools, is a comprehensive public high school which provides programs to meet the diverse needs of approximately 1,300 students enrolled in grades 9-12. We offer a challenging and rigorous program of study to prepare students for a wide variety of post-secondary educational placements or for employment.

CURRICULUM

The curriculum includes a full academic program and electives in fine and practical art, business, music, and technology. Honors courses are offered in business, music, English, mathematics, science, social studies, and world languages. AP programs are available in biology, chemistry, physics, environmental science, English, calculus, statistics, government/politics, macroeconomics, US history, human geography, French, Latin, Spanish, Italian, and studio art.

In addition, the curriculum is extended to include an Academy of Fine and Performing Arts and has been recognized nationally, since 2008, as one of the Top 100 Communities for Music. The nationally recognized Radio/Television Broadcasting program offers students hands on opportunities to encounter Federal Communications Commission regulations while producing diverse programming aired on the local access cable outlet. The state of the art studio exposes the students to a true network experience within the rigors of live and post production concepts in the global media pathway. Students may enroll in the CISCO Networking Academy and are eligible to earn certification as CISCO Certified Network Associates (CCNA). This is a highly recognized IT certification applicable to all fields of study.

We also offer the students the opportunity to experience workplace readiness and receive on-the-job training through the Cooperative Education Work Experience, School to Careers, and Work Internship programs.

College credit is available to students who select courses designated through a partnership with University of Medicine and Dentistry of New Jersey, Seton Hall University, Rider University, and Fairleigh Dickinson University.

The school's academic program is further enhanced by a co-curricular program that includes twenty-five interscholastic athletic teams. Nutley High School strives to engage as many students as possible in student activities and as a result we offer a wide variety of extra-curricular activities including, dramatics, student government, publications, service organizations and clubs.

STAFF

Nutley High School's dedicated professional staff is committed to providing a rigorous and expansive academic program. Approximately 65% of the staff holds advanced degrees (M.A., Ph.D. or Ed.D.) In the classroom, teachers incorporate technology and instructional strategies, develop critical thinking skills, as well as content knowledge.

GRADUATION REQUIREMENTS FOR THE CLASS OF 2017

In order to graduate from Nutley High School, students must receive a passing score on the New Jersey High School Proficiency Assessment and successfully complete a minimum of 120 credits, with the following requirements:

English.....20 credits Math.....15 credits World Languages.....5 credits Financial Literacy.....2.5 credits
 U.S. History.....10 credits Science.....15 credits Visual/Performing Arts...5 credits Computer Applications....2.5 credits
 World History/Cultures...5 credits PE/Health.....20 credits Practical Arts.....5 credits *Please note: 5 credits = 1 credit year*

GRADING SCALE

Nutley High School’s grading scale utilizes letter grades instead of number grades, including “plus” and “minus” designations for letter grades. Please note, Honors (HON) and Advanced Placement (AP) courses are weighted equally. Unweighted grade point average (GPA) is based on a scale beginning with 0.0 and having a ceiling of 4.0. Weighted grade point average (WGPA) is based on a scale beginning with 0.0 and having a ceiling of 4.5. All graded (non-pass/fail) courses are used in the calculation of GPA and WGPA. A student’s cumulative GPA and WGPA are tabulated and posted on the transcript at the conclusion of each school year and on quarterly report cards.

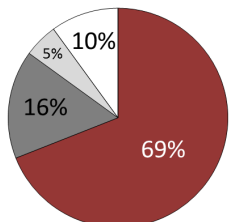
Grade	Numeric Equivalent	GPA	WGPA HON/AP
A	94-100	4.0	4.5
A-	90-93	3.7	4.2
B+	87-89	3.3	3.8
B	83-86	3.0	3.5
B-	80-82	2.7	3.2
C+	77-79	2.3	2.8
C	73-76	2.0	2.5
C-	70-72	1.7	2.2
D+	67-69	1.3	1.8
D	60-66	1.0	1.5
F	<60	0.0	0.0

CLASS RANK

At Nutley High School we create an environment that is academically rigorous. The majority of our students meet that challenge by earning exemplary grades. We believe that rank in class unnecessarily increases competition and that our students’ levels of achievement are not equitably or fully communicated by this single transcript statistic. Nutley School District policy therefore precludes the reporting of rank in class.

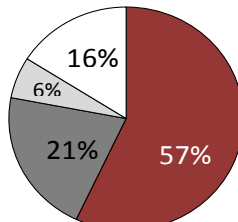
CLASS OF 2014

Senior class enrollment: 317
 Higher education 90%
 4 year colleges 69%
 2 year colleges 16%
 Career & Technical Education 5%



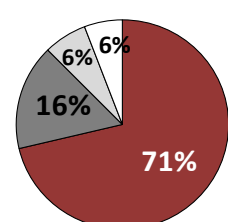
CLASS OF 2015

Senior class enrollment: 302
 Higher education 84%
 4 year colleges 57%
 2 year colleges 21%
 Career & Technical Education 6%



CLASS OF 2016

Senior class enrollment: 300
 Higher education 94.5%
 4 year colleges 71.3%
 2 year colleges 16.3%
 Career & Technical Education 6.6%



SAT I MEAN SCORES

	2014			2015			2016		
	Verbal	Math	Writing	Verbal	Math	Writing	Verbal	Math	Writing
Nutley	473	503	484	481	498	480	489	515	492
NJ	501	523	502	500	521	499	495	514	492
National	497	513	487	495	511	484	494	508	482

SAT II MEAN SCORES

	2014	2015	2016
Literature	606	648	NA
US History	617	598	NA
Math I	NA	NA	NA
Math II	701	711	695
Biology-E	NA	NA	NA
Chemistry	661	675	685
Physics	NA	NA	NA



National Merit Award Scholars

	2014	2015	2016
National Merit Scholarship Recipients	2		
National Merit Finalists	2	1	
National Merit Semifinalists	2	1	
National Merit Commended	2	5	3

Average Composite ACT Scores

	2014	2015	2016
NHS	22.3	22.2	22.5
NJ	23.1	23.2	23.1
National	21	21	20.8

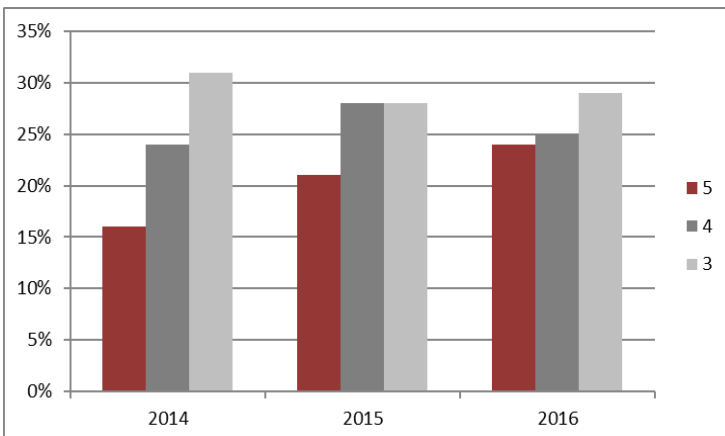
Total Tested

2014	111
2015	102
2016	102



ADVANCED PLACEMENT

2014	2015	2016
143 students	148 students	146 students
287 exams	286 exams	297 exams
71% scoring 3 or better	77% scoring 3 or better	78% scoring 3 or better



AP SCHOLARS

	2014	2015	2016
	# of students	# of students	# of students
Scholars	21	17	15
Scholars w/Honor	13	3	7
Scholars w/Distinction	14	13	18
National Scholars	2	2	-

CURRICULUM

Nutley High School operates on a traditional 8-period day. Master Schedule Parameters and course prerequisites affect students' opportunities to schedule Honors and AP courses. Exceptional students at Nutley High School are often limited in their ability to schedule multiple Honors and AP courses. It is requested that those facts be considered when evaluating the academic rigor of Nutley High School students' schedules. Honors and AP courses are in **BOLD**.

ENGLISH

English I, II, III, IV; SAT Prep 11, 12; EXIT (Yearbook); School News I, II School News III Honors, ESL Beginner 1 & 2 Reading; ESL Beginner 1 & 2 Writing; ESL Intermediate 1 & 2; ESL Advanced 1 & 2; **English I, II Honors, AP English III, AP Humanities/English IV**

MATHEMATICS

Algebra I; Advanced Algebra I; Algebra II; Advanced Algebra II; Algebra II Fundamentals; College Algebra; Geometry; Advanced Geometry; Pre-Calculus; Calculus; Advanced Algebra with Trig; **Accelerated Algebra II Honors; Accelerated Geometry Honors; Accelerated Pre-Calculus Honors; AP Calculus AB; AP Calculus BC; AP Statistics**

SOCIAL STUDIES

World History; US History I, II; European History; Sociology; Archaeology; Macroeconomics; Race in America; Holocaust & Genocide Studies; **World History Honors; US History I Honors; US History II Honors; AP US History; AP Macroeconomics; AP Government & Politics; AP Human Geography**

WORLD LANGUAGES

Spanish I, II, III, IV; Italian I, II, III, IV; Latin I; **Spanish III, IV, V Honors; Italian III, IV, V Honors; Latin III, IV Honors; AP Spanish Language & Culture; AP Italian Language & Culture; AP Latin**

SCIENCE

Biology; Chemistry; Physics; Geophysical Science; Environmental Science; Marine Science; Forensic Science; Microbiology; Human Physiology; Health Dynamics; **Biology Honors; Chemistry Honors; Forensic Science Honors; Leadership & Dynamics in Health Care Honors; Physics Honors; Human Physiology Honors; AP Biology; AP Chemistry; AP Physics, AP Physics 1 Algebra Based; AP Physics 2; AP Environmental Science**

FINE & PERFORMING ARTS

Art Fundamentals; Art I, II; Advanced Art; Portfolio Building; Digital Photography; Graphic Design; Music Exploration; Music Fundamentals I, II; Concert Band; Orchestra; Choralettes; Concert Choir; Jazz Lab; Arts Academy; Instrumental Lessons; **Chamber Singers Honors; Wind Ensemble Honors; AP Studio Art: Drawing, 2-D & 3-D**

CAREER, CONSUMER & LIFE SKILLS

Computer Applications; Financial Literacy; IT Essentials; CISCO I; Web Design; International Business Practice Firm; Business Law; Sports & Entertainment Marketing; Digital Photography II; Woodworking; Furniture Fabrication; Carpentry; Practical Electricity; Metalworking; Advanced Metals; Mechanical Drawing; Residential Architecture; Culinary; Advanced Culinary; Hospitality Management; Radio/TV Broadcasting I, II; Cooperative Education Work Experience; Intern & Apprenticeships; School to Careers; **Radio/TV Broadcasting III Honors; Cisco II Honors; CP Accounting Honors**

CLASS OF 2016 ACCEPTANCES

Adelphi University
University of Alabama
Albany College of Pharmacy
Albright College
Alvernia College
American University
Averett University
Bard College
Barry University
Becker College
Benedict College
Bergen Community College
Binghamton University
Boston University
University of Bridgeport
Bryant University
Cabrini College
Caldwell University
University of California, Davis
University of California, Irvine
California College of the Arts
California Institute of the Arts
Carleton University
Centenary College
University of Central Florida
Champlain College
City College of New York CUNY
Clark University
Coastal Carolina University
Colgate University
University of Colorado at Boulder
University of Connecticut
County College of Morris
The Culinary Institute of America
Dartmouth College
Delaware Valley College
University of Dayton
Delaware State University
University of Delaware
Drew University

Drexel University
Duquesne University
East Stroudsburg University
Eastwick College
Essex County College
Fairfield University
Fairleigh Dickinson University
Felician College
Fisher College
Florida Atlantic University
Florida State University
Fordham University
Franklin and Marshall College
George Mason University
Guilford College
University of Hartford
Hartwick College
Hofstra University
College of Holy Cross
Indiana State University
Iona College
Immaculata University
Ithaca College
James Madison University
Johnson & Wales University
Kean University
University of Kentucky
King's College
Kutztown University
Lafayette College
Loyola University Maryland
Lycoming College
University of Maine
Manhattan College
Marist College
University of Maryland
Marymount Manhattan College
Marywood University

Massachusetts College of Pharmacy & Health Sciences
University Massachusetts
University of Miami
Michigan State University
University of Michigan
Misericordia University
Monmouth University
Montclair State University
Moravian College
Mount Saint Mary's University
Muhlenberg College
New England College
University of New Hampshire
University of New Haven
New Jersey City University
New Jersey Institute of Technology
The College of New Jersey
New York Institute of Technology
New York University
Northeastern University
Oberlin College
Ohio University
Old Dominion University
Pace University
Pennsylvania State University
Philadelphia University
University of Pittsburg
Pratt Institute
Providence College
Purdue University
Quinnipiac University
Ramapo College of New Jersey
Rensselaer Polytechnic Institute
University of Rhode Island
Rider University
Rochester Institute of Technology
Roger Williams University
Rowan University

Rutgers University
Sacred Heart University
Saint Peter's University
Salve Regina University
Savannah College of Art and Design
School of Visual Arts
University of the Sciences
University of Scranton
Seton Hall University
Siena College
Skidmore College
University of South Carolina
University of Sothern California
St. Elizabeth College of Nursing
St. John's University
Stetson University
Stevens Institute of Technology
SUNY Colleges - Albany, Maritime, Oneonta
Stockton University
Stony Brook University
Susquehanna University
Syracuse University
The University of Tampa
Temple University
University of Tennessee
The Ohio State University
Thomas Jefferson University
Towson University
The University of the Arts
Villanova University
Virginia Tech
Wagner College
University of Washington
Wesley College
West Chester University
West Virginia University
Westminster Choir College
Wilkes University
William Paterson University
University of Wisconsin